

**AGENDA**  
**A meeting of the Council of the Corporation**  
**of the Town of Northeastern Manitoulin and the Islands**  
**to be held on Tuesday, April 7, 2026**  
**at 7:00pm**

**1. Call to Order**

**2. Approval of Agenda**

**PRESENTATION: Introduction to Compass Greenfield Development**

**3. Disclosure of Pecuniary Interest & General Nature Thereof**

**4. Minutes of Previous Meeting**

- i. Confirming By-Law 2026-19

**5. New Business**

- i. Donation Request – Bluegrass in the Country
- ii. Donation Request – Manitoulin Fine Arts
- iii. FONOM request for support – housing enabling infrastructure programs

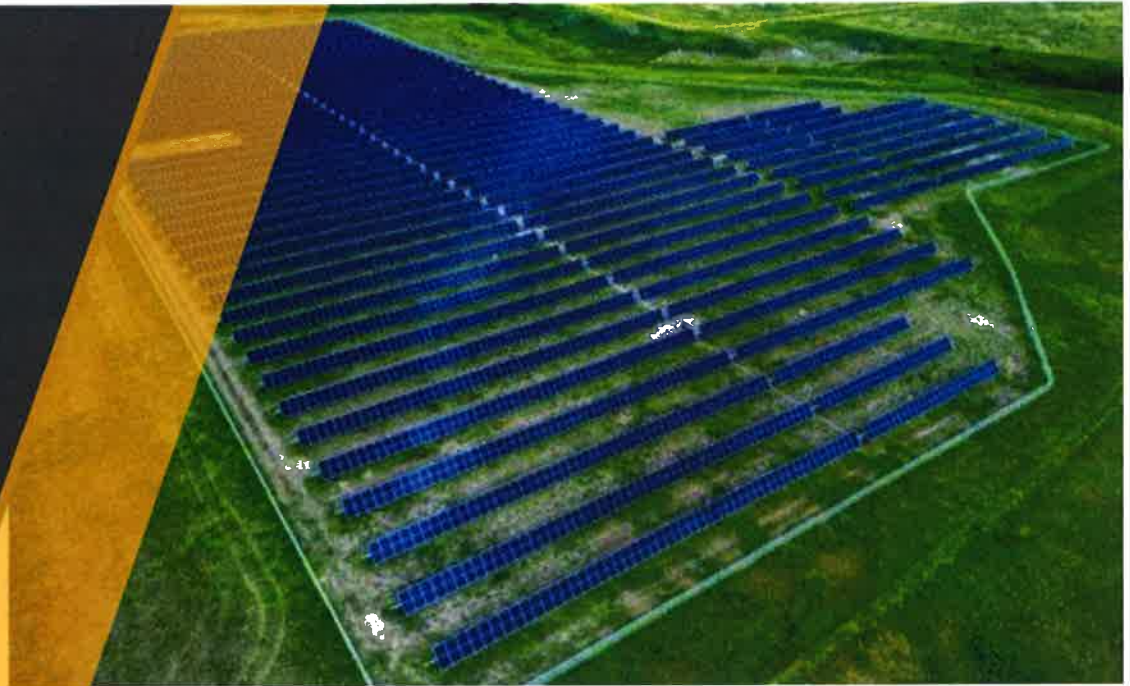
**6. Minutes & Reports**

- i. 2025 Little Current Lagoon Annual Report
- ii. OGRA Conference

**7. Adjournment**

# Introduction to Compass Greenfield Development Solar Project

**April 7, 2026**



**Prepared for**

**Town of Northeastern Manitoulin and  
the Islands**

**&**

**Township of Assiginack**



# Overview

1. Executive Summary
2. About Compass Greenfield Development (CGD)
3. Ontario's Urgent Need for New Power
4. Why your municipality?
  - Community Benefits
5. Why this location was chosen?
6. Proposed Buildable Area
7. Solar Design
  - Look and Feel
  - Design Characteristics
8. Development Timeline
9. Request for Council Direction



Example of a solar project – Compass Greenfield Development's NM Solar 2020 Inc., Lomond Saskatchewan – approximately 7 acres

# Executive Summary

Compass Greenfield Development ("CGD") is developing an approximate 19 MWac solar-project in your municipality.

## Background and Request

- The Independent Electricity system Operator ("IESO") is forecasting a 65% increase in electricity demand between 2025 and 2050 in ON.
- Compass Greenfield Development ("CGD") team has been working in Ontario since 2011 and was awarded 46 MW/200 MWh of battery energy storage, 31MW expecting COD in Q1 2026, 15MW achieved COD summer 2025.
- CGD participated in both the energy and capacity procurement LT2 Window 1, submitting a portfolio of projects
- CGD is proposing an approx 19 MWac project in your municipality that will include solar energy on a single site.
- CGD will conduct a variety of stakeholder engagement activities, decommissioning security, and provide a Community Benefits Payment on an annual basis as outlined in our Indigenous and Community Engagement Plan (ICEP)

# About Compass Greenfield Development

Our sister company Compass Renewable Energy Consulting Inc., has been consulting and developing renewable and clean energy projects in Ontario since 2011. We have experience across the development lifecycle from pre-screening, contracting, construction and operations. **It's our local knowledge, local success and hands on approach that distinguishes us from our competition.**

## 10 + years Experience in Energy Development in Ontario

- An industry leader in renewable and clean energy development across Ontario.
- We have developed over 100 renewable energy projects in Ontario representing over 100 megawatts (MW) in the last 6 years and supported the development of over 2,000 MWs for our clients.
- Track record of success with principles that designed and launched Ontario's renewable and clean energy procurements in the public sector.
- Our projects provide clean, renewable energy to communities while offering land-owners long-term, guaranteed passive income through lease payments.

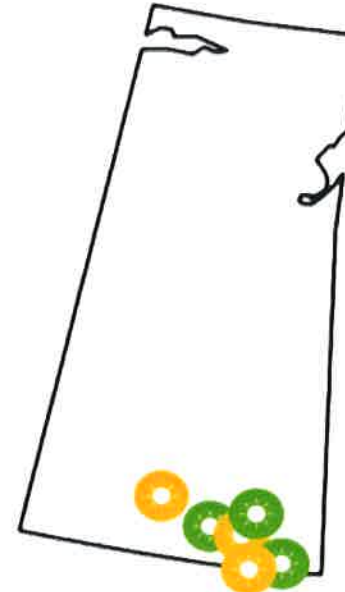
# CGD's Projects in Canada

In total we have over 50 MW of solar and battery storage operating, under construction or contracted and an additional 500 MW in early stages of development in ON and SK.

Ontario (>200 MW\*)



Saskatchewan (>300 MW\*)



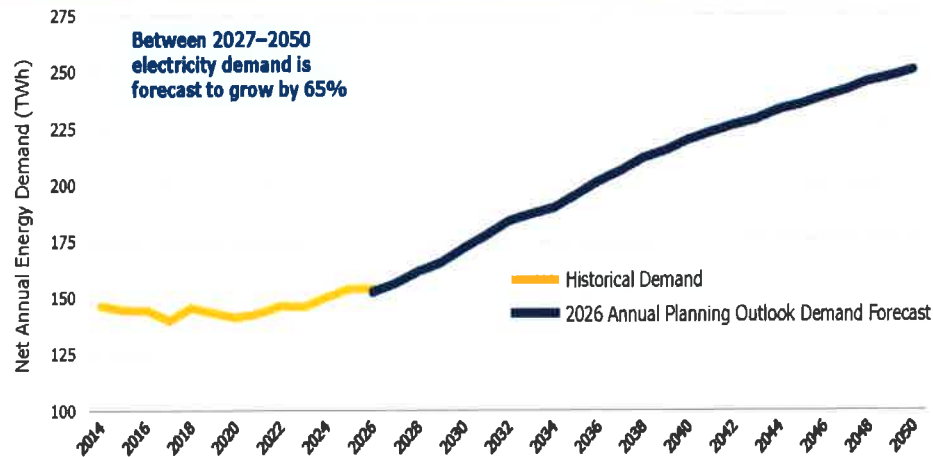
# Ontario's Urgent Need for New Power

In October 2024, Ontario's Independent Electricity System Operator (IESO) updated its demand forecast for Ontario and indicated that it is anticipating a 65% increase in energy demand between 2025 and 2050.



## 65% Demand Growth by 2050

### Demand Is Going Up: The Long-Term Outlook



3 IESO | Connecting Today. Powering Tomorrow.

## What is driving demand growth?

- Large increases in demand in the near and medium term
- Industrial sector and data centre growth are the primary drivers of new demand
- Industrial electric vehicle production and supply chain sub-sector
- Commercial sector growth, increasing population, and electrification are also continuing to escalate electricity demand across the province.

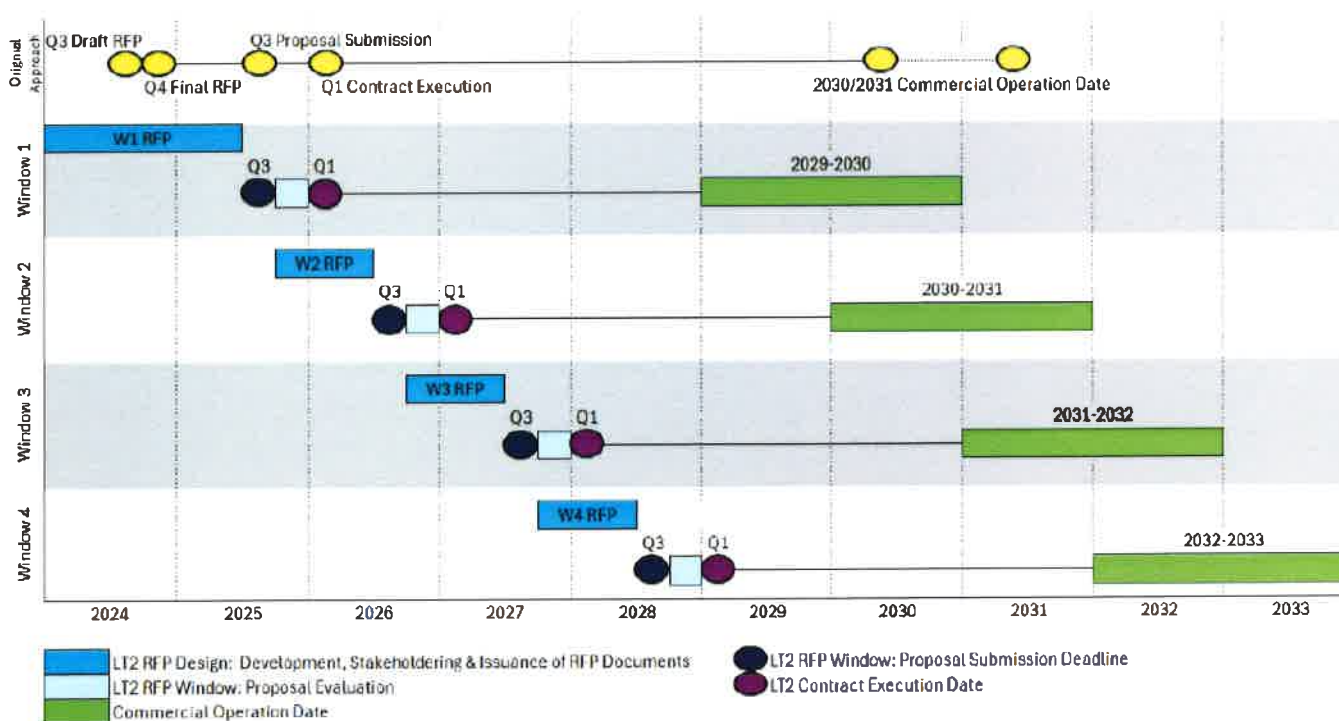
# LT-2 Development Timeline

There will be multiple RFP windows through the Long Term 2 (LT-2) procurement, see figure below. The project will be submitted into the next procurement window, **LT2 W2 procurement – Expected submission deadline of Q2 2027.**



## Development Timing – LT2 (per the IESO)

### LT2 RFP Windowed Approach: Overview (2)



Per the illustrative timeline, submission window #1 would have a **proposal submission deadline in Q3 2025**, with **contracts awarded in Q1 2026** and **expected commercial operation in 2029/2030**

Future submission windows are expected to follow this timeline.

# Why This Municipality?

The Climate Action Vision for the District of Manitoulin makes a commitment to support renewable energy development. Goals for the action plan include increasing energy efficiency and the adoption of renewable energy/low carbon technologies. Manitoulin Island is also looking at expanding the Community Improvement Plan to include renewable energy and low carbon incentives, grants and other loans programs for local businesses.

## Town of Northeastern Manitoulin and the Islands Official Plan

- Under the Climate Change section of the Official Plan there is clear support for renewables
- "promoting the design and orientation of developments, which maximize the use of alternative or renewable energy systems at appropriate locations"
- Green industries and green building technologies and construction practices

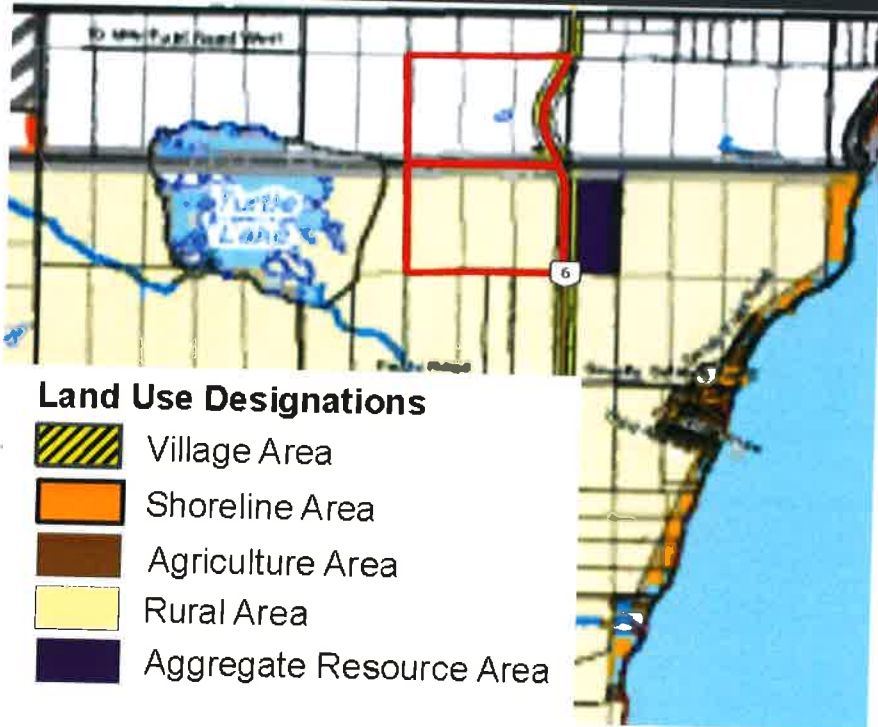
## Community Benefits

- **A stronger local energy grid:** distributed connected energy generators add to a municipalities electrical grid resiliency.
- **Job creation, local economic stimulus:** construction will lead to a creation of jobs. On-site activity will briefly boost the revenues of local business.
- **Community Benefit Agreement (CBA):** CGD will commit to an annual payment of \$1,000 / MWac to the municipality
- CGD will pay for any third-party costs incurred by the municipality to support this project.
- **Diversified income stream for local landowners:** keep landownership within your municipality.
- **Increased tax based for the municipality**

# Why was this location chosen?

The IESO procurement and Ministry of Agriculture guidelines restrict solar development on Prime Agricultural Areas as defined in the Provincial Policy Statement. The proposed Project is located on rural lands as per both the District of Manitoulin Official Plan (OP) and the Town of Northeastern Manitoulin and the Islands OP, and the local transmission station supports the projects capacity.

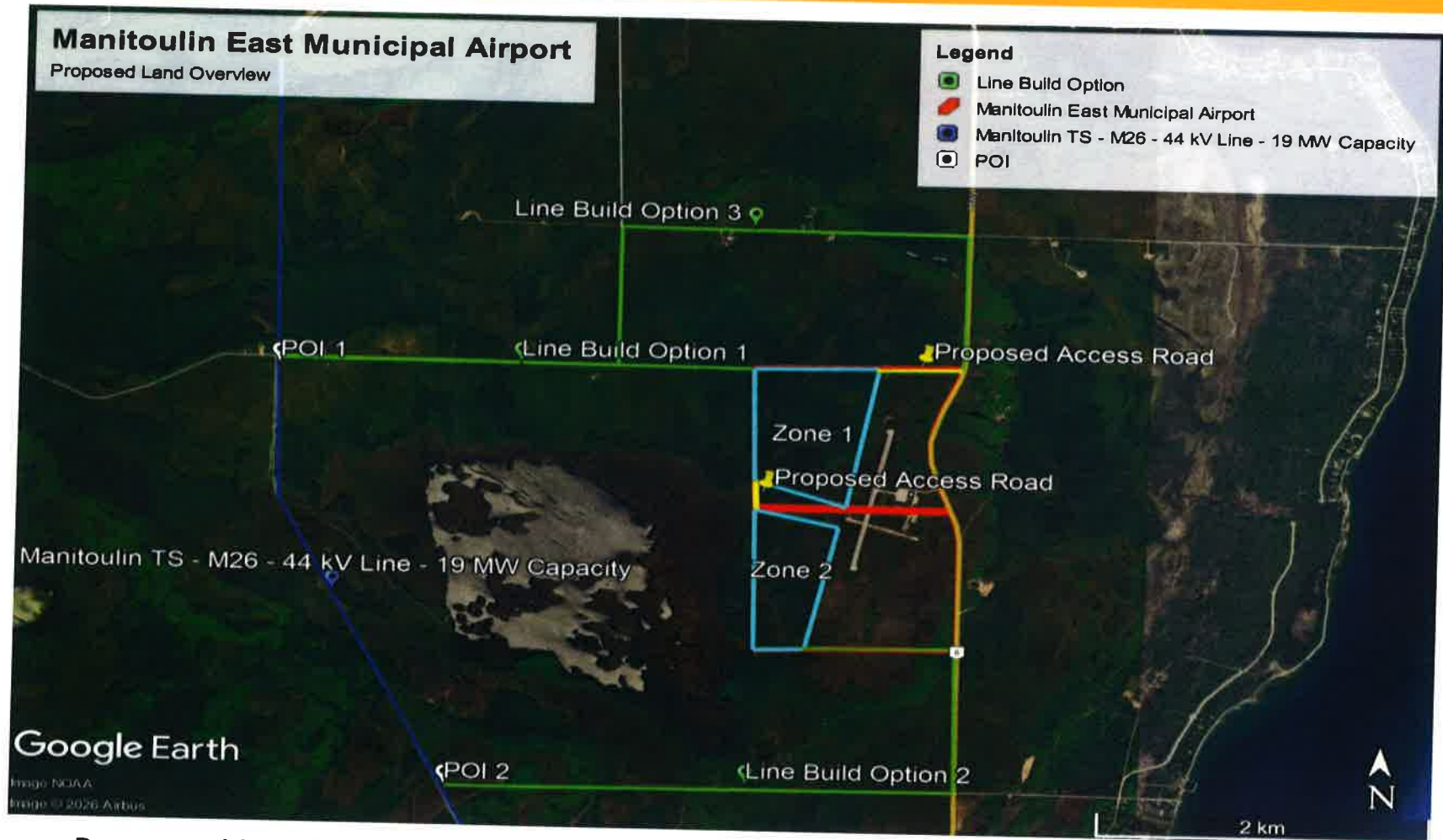
## Official Plan Designation District of Manitoulin



## Official Plan Designation Town of NEMI



# Proposed Buildable Areas



- Proposed buildable area allows for the potential airport expansion
- 1 of the three proposed connection line options will be constructed

# Preliminary Design: Look and Feel

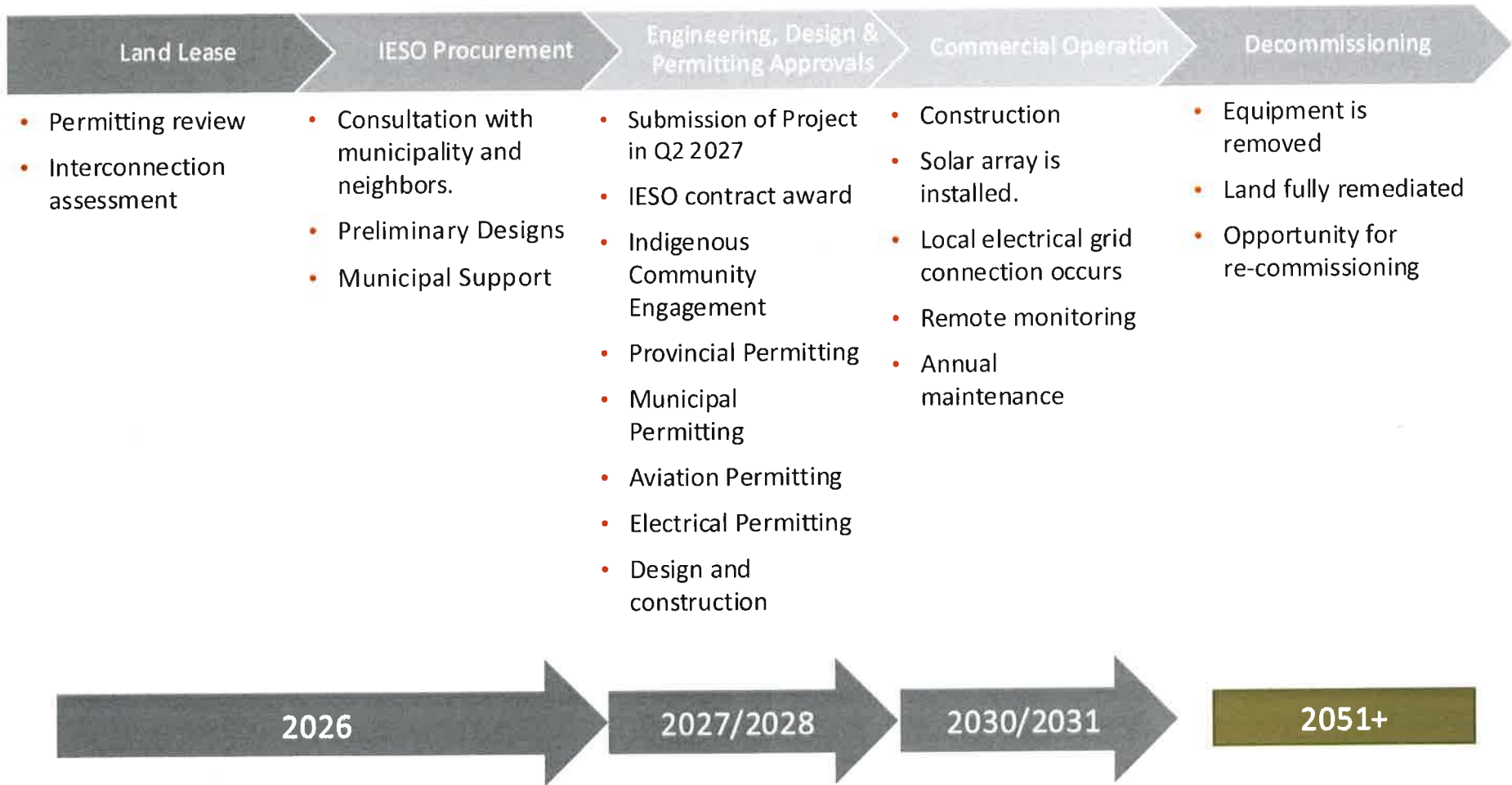


# Design Characteristics: How does this impact the land?

## Details of Project

- **Racking Foundations:** Steel piles are screwed or driven into the ground. At decommissioning, piles can be removed, and the land use is returned to its prior state.
- **Racking Design and Spacing:** Rows are usually 25 feet apart, with racking that is either fixed-tilt or tracking.
- **Footprint Size:** Up to 110 acres
- **Security:** Project is fenced in and locked.
- **Operations:**
  - Project is 24/7 remote monitored and controlled. Operations and maintenance contractors are locally based in Ontario.
  - Scheduled site visits occur 4 times a year.
- **Interconnection:** The solar system is connected to the Hydro One distribution grid.
- **Decommissioning Security:** will be posted mid-way through the project's contract to ensure the landowner has funds to pay for decommissioning.

# Development Timeline



Successful developments require up to five years to reach commercial operation.

# Request for Council Direction

CGD is requesting Council approval to enter into a long-term lease agreement (up to 110 acres) at Manitoulin East Municipal Airport to advance a solar development project

## Benefits to the Airport Include:

### **1. Stable, Long-Term Revenue**

- 30+ year lease agreement
- Predictable, contracted income stream (government-backed)

### **2. Monetizing Unused Land**

- Up to 110 acres of non-operational airport land
- No impact to core airport operations

### **3. Local Economic Development**

- Supports clean energy investment in the region
- Potential for local jobs during construction
- Positions municipality as a sustainability leader



# Thank you

## Contact

**Roberto Caputo**

Senior Director, Development

Compass Greenfield Development  
192 Spadina Ave., Suite 506, Toronto, ON, M5T 2C2

Email: [Roberto@compassgreenfield.ca](mailto:Roberto@compassgreenfield.ca)

Phone: (416) 220-9154

**THE CORPORATION OF THE TOWN OF  
NORTHEASTERN MANITOULIN AND THE ISLANDS**

**BY-LAW NO. 2026-19**

Being a by-law of the Corporation of the Town of Northeastern Manitoulin and the Islands to adopt the minutes of Council for the term commencing November 15, 2022 and authorizing the taking of any action authorized therein and thereby.

WHEREAS the Municipal Act, S.O. 2001, c. 25. s. 5 (3) requires a Municipal Council to exercise its powers by by-law, except where otherwise provided;

AND WHEREAS in many cases, action which is taken or authorized to be taken by a Council or a Committee of Council does not lend itself to an individual by-law;

NOW THEREFORE THE COUNCIL OF THE CORPORATION OF THE TOWN OF NORTHEASTERN MANITOULIN AND THE ISLANDS ENACTS AS FOLLOWS:

1. THAT the minutes of the meetings of the Council of the Corporation of the Town of Northeastern Manitoulin and the Islands for the term commencing November 15, 2022

March 17, 2026

are hereby adopted.

2. THAT the taking of any action authorized in or by the minutes mentioned in Section 1 hereof and the exercise of any powers by the Council or Committees by the said minutes are hereby ratified, authorized and confirmed.
3. THAT, where no individual by-law has been or is passed with respect to the taking of any action authorized in or by the minutes mentioned in Section 1 hereof or with respect to the exercise of any powers by the Council or Committees in the above-mentioned minutes, then this by-law shall be deemed for all purposes to be the by-law required for approving and authorizing the taking of any action authorized therein or thereby or required for the exercise of any power therein by the Council or Committees.
4. THAT the Mayor and proper Officers of the Corporation of the Town of Northeastern Manitoulin and the Islands are hereby authorized and directed to do all things necessary to give effect to the recommendations, motions, resolutions, reports, action and other decisions of the Council or Committees as evidenced by the above-mentioned minutes in Section 1 and the Mayor and Clerk are hereby authorized and directed to execute all necessary documents in the name of the Corporation of the Town of Northeastern Manitoulin and the Islands and to affix the seal of the Corporation thereto.

READ A FIRST, SECOND AND THIRD TIME AND FINALLY PASSED THIS  
7 th day of April 2026

Al MacNevin

Mayor

Pam Myers

Clerk

**The Corporation of the Town of Northeastern Manitoulin and the Islands**  
**Minutes of a meeting of Council held Tuesday, March 17, 2026**  
**at 7:00p.m.**

**PRESENT:** Mayor Al MacNevin, Councillors: Patti Aelick, Al Boyd, Laurie Cook, Mike Erskine, and George Williamson, Dawn Orr, William Koehler, Bruce Wood

**STAFF PRESENT:** David Williamson, CAO  
Pam Myers, Clerk  
Duane Deschamp, Fire Chief  
Wayne Williamson, Manager of Public Works  
Reid Taylor, Manager of Community Services

Mayor MacNevin called the meeting to order at 7:00 p.m.

**Resolution No. 73-03-2026**

Moved by: A. Boyd

Seconded by: G. Williamson

RESOLVED THAT the Council of the Corporation of the Town of Northeastern Manitoulin and the Islands approves the agenda as presented.

Carried

**Resolution No. 74-03-2026**

Moved by: W. Koehler

Seconded by: G. Williamson

RESOLVED THAT the Council of the Corporation of the Town of Northeastern Manitoulin and the now reads a first, second and third time and finally passes By-law 2026-18 being a by-law to adopt the minutes of Council for the term commencing November 15, 2022 and authorizing the taking of any action therein and thereby.

Carried

**Resolution No. 75-03-2026**

Moved by: B. Wood

Seconded by: P. Aelick

**Whereas** the Town of Northeastern Manitoulin and the Islands, like many municipalities, utilizes chip-and-tar surface treatment on a significant portion of its road network; and

**Whereas** the Town has observed a substantial decrease in the length of time these treated roads remain in acceptable condition; and

**Whereas** the quality and durability of the oil used in the surface treatment appears to be a contributing factor; and

**Whereas** the Ministry of the Environment amended its regulations several years ago, permitting only lighter-grade oils for environmental considerations; and

**Whereas** the reduced durability of the lighter-grade product has resulted in more frequent resurfacing cycles and has consequently led to increasing maintenance costs;

**Now therefore be it resolved that** the Town of Northeastern Manitoulin and the Islands respectfully requests that the Ministry of the Environment reconsider its decision regarding the lighter grade of oil, taking into account the increased number of applications required, as well as the associated additional time, energy, and financial burden placed on municipalities or develops a better alternative oil.

And Further that this motion be forwarded to the Ministry of Environment, AMO, Good Roads, FONOM, MPP Bill Rosenburg, and all other municipalities.

Carried

**The Corporation of the Town of Northeastern Manitoulin and the Islands  
Minutes of Council**

**Page 2**

**Resolution No. 76-03-2026**

Moved by: B. Wood

Seconded by: P.Aelick

RESOLVED THAT the Council of the Corporation of the Town of Northeastern Manitoulin and the Islands accepts the landfill annual report for the closed Green Bay site for 2025.

Carried

**Resolution No. 77-03-2026**

Moved by: W. Koehler

Seconded by: L. Cook

RESOLVED THAT the Council of the Corporation of the Town of Northeastern Manitoulin and the Islands donates \$200 to the Little Current Yacht Club.

Carried

Councillor Boyd declared a conflict

**Resolution No. 78-03-2026**

Moved by: L. Cook

Seconded by: B. Wood

RESOLVED THAT the Council of the Corporation of the Town of Northeastern Manitoulin and the Islands donates \$200 to Manitoulin Fine Arts.

Carried

**Resolution No. 79-03-2026**

Moved by: M. Erskine

Seconded by: G. Williamson

RESOLVED THAT the Council of the Corporation of the Town of Northeastern Manitoulin and the Islands donates \$200 to the Huron Bass Tour.

Carried

**Resolution No. 80-03-2026**

Moved by: W. Koehler

Seconded by: A. Boyd

RESOLVED THAT the Council of the Corporation of the Town of Northeastern Manitoulin and the Islands does now adjourn at 7:43 pm.

Carried

\_\_\_\_\_  
Al MacNevin            Mayor

\_\_\_\_\_  
Pam Myers            Clerk

Website  
[www.bluegrassinthecountry.net](http://www.bluegrassinthecountry.net)

Email  
[bluegrass\\_ban@live.com](mailto:bluegrass_ban@live.com)

FaceBook  
[Bluegrass in the Country](https://www.facebook.com/bluegrassinthecountry)

Address  
5145 Hwy 551  
Providence Bay, ON  
(FAIRGROUNDS)



## Dear Valued Sponsor,

**March 10, 2026**

Manitoulin Special Olympics has shared the love of sport and sportsmanship with over 60 athletes on Manitoulin Island for almost 20 years. Special Olympics offers inclusive sports training and competitive opportunities for athletes of all abilities, celebrating the talents and dedication of individuals with intellectual and developmental differences. It fosters confidence in our athletes, enabling them to smile, laugh, and thrive without fear of judgment. Our programs promote inclusion and accomplishment, offering seven sports programs on Manitoulin Island. With community support, we provide essential funding for equipment, training, transportation, and competition registration, ensuring every athlete has the opportunity to thrive.

**Bluegrass in the Country**, a volunteer-run event, supports these programs by donating **100%** of the funds raised to Manitoulin Special Olympics (MSO). With the support of quality coaches, our athletes have competed and excelled at Regionals, Provincials, Nationals, and even the World Games.

### Join Us at Bluegrass in the Country 2026

- When: June 12-14, 2026
- Where: NEW Lone Pine Stage, Providence Bay, Manitoulin Island
- Musical Lineup:
  - Larry Efaw and the Bluegrass Mountaineers
  - Duke Street Turnaround
  - Canucky Bluegrass Boys
  - Avery Drive
  - Larry Carriere & Different Picks
  - Onion Honey
  - Granite Hill
  - Ben Lentir
  - The Blender Project

We are currently seeking businesses and individuals to sponsor Bluegrass in the Country. Your sponsorship will help cover start-up costs, including band expenses, and ensure the event's success. In return, your business will receive promotion throughout the three-day event:

- Recognition on an advertising screen and announcements during the festival
- Placement of your company name on our Bluegrass in the Country Website for a full year
- An official Income tax-deductible donation receipt
- Complimentary weekend passes based on your sponsorship level (1 ticket for every \$100 donation)

#### Sponsorship Levels:

- Platinum Sponsor (\$500+)
- Gold Sponsor (\$100-\$499)
- Silver Sponsor (\$50-\$99)

Your support is crucial to maintaining the programs that enrich the lives of our athletes.

#### How to Donate:

- Online: [Donate here](#). Write "SUPPORT BGIC" in the comment section to receive tickets.
- By Cheque: Payable to Manitoulin Special Olympics, Box 86, Mindemoya, Ontario, POP 1S0

Please include a business card with your cheque or email it to [manitoulin@specialolympicsontario.ca](mailto:manitoulin@specialolympicsontario.ca) for advertising purposes.

For further information, please contact Ben Lentir at 705-210-0807.

Thank you for your support in helping us keep these programs running and for making a difference in the lives of our athletes.

**Manitoulin Special Olympics**  
**Fundraising Committee**  
**Bluegrass in the Country**



Manitoulin Island



March 13, 2026

Town of Northeastern Manitoulin and the Islands  
14 Water Street East, P.O. Box 608  
Little Current, ON P0P 1K0

Dear honoured Mayor, Councillors and CAO,

This letter is for clarification regarding my previous letter Dated April 8, 2025 and the Resolution No. 87-04-2025. We at MFAA are so happy to learn that we have the support of the town in granting us use of the main hall for the Northern Ontario Art Association (NOAA) 70<sup>th</sup> Annual Juried Art Exhibition and AGM. I recently noticed that there was a mix-up in the dates. The NOAA Exhibition 2026 is in September and The Resolution says July.

I am writing to clear up the dates and make another request. Our organizing team has been steadily working on the details of all that is involved in putting together such a multifaceted event. In that process we discovered that we would need a little more space. Please note that no fees are charged for any part of this event.

Here is the list of our needs with the dates and times requested:

Wed Sep 9 - 8:30 am to 5 pm - Main Hall - to receive paintings from the 15 clubs  
Wed Sep 9 - 1 to 5 pm - Lion's Den - painting workshop (2 to 4 pm, 15-20 participants)  
Thurs Sep 10 - 8 am to 8 pm - Main Hall - 2 Jurors and 2 scribes - artwork judging  
Fri Sep 11 - 3 to 7 pm - Main Hall - Welcoming Reception - open to the public  
Fri Sep 11 - 5 to 9:00 pm - Main Hall - Awards ceremony - open to the public  
Fri Sep 11 - 3 to 9 pm - Kitchen - to prepare the refreshments for guests  
Sat Sep 12 - 8:00 am to 5:30 pm - Main Hall - Exhibition open to the public (9 to 3:30)  
Sat Sep 12 - 8:00 am to 12:30 pm - Curling Lounge - NOAA AGM (24 people)  
Sat Sep 12 - 8 am to 2 pm - Kitchen - to prepare breakfast and lunch

We are hopeful that the Town of NEMI will assist us in supporting the Arts by granting this request for use of these spaces. Please feel free to contact me for more information.

With respect and gratitude,

Pam Jackson (705-210-0529)

**THE CORPORATION OF THE TOWN OF  
NORTHEASTERN MANITOULIN AND THE ISLANDS  
MEETING OF COUNCIL**

MOVED BY: \_\_\_\_\_

DATE:

SECONDED BY: \_\_\_\_\_

MOTION NO. \_\_\_\_\_

WHEREAS the Governments of Canada and Ontario have announced a joint partnership to invest in housing-enabling infrastructure and reduce municipal development charges to support housing affordability and supply;  
 AND WHEREAS this program provides funding primarily to municipalities that reduce and maintain low development charges;  
 AND WHEREAS many municipalities in Northern Ontario do not levy development charges and therefore may not be positioned to benefit from this program in the same manner;  
 AND WHEREAS Northern municipalities face disproportionately higher costs to build and maintain infrastructure, including increased per-kilometre costs for water, wastewater, and transportation systems, combined with smaller tax bases and vast geographic areas;  
 AND WHEREAS infrastructure investment is required to support housing development regardless of whether development charges are in place;  
 AND WHEREAS without access to comparable funding mechanisms, Northern municipalities risk being placed at a structural disadvantage in their ability to support housing growth, attract investment, and contribute to provincial and national housing objectives;  
 AND WHEREAS Northern Ontario communities are essential contributors to Ontario's and Canada's economy and must be supported to grow and thrive;  
 THEREFORE BE IT RESOLVED that the Federation of Northern Ontario Municipalities (FONOM) calls on the Governments of Canada and Ontario to ensure that housing-enabling infrastructure programs are applied equitably across all regions, including municipalities that do not levy development charges;  
 AND FURTHER BE IT RESOLVED that both levels of government establish complementary funding mechanisms or program streams to provide comparable support to Northern municipalities that are not eligible under development charge reduction frameworks;  
 AND FURTHER BE IT RESOLVED that FONOM distribute this resolution to its member municipalities for endorsement and forward it to the Prime Minister of Canada, the Premier of Ontario, the federal Minister of Housing, Infrastructure and Communities, the federal Minister of Finance, the federal Minister of Indigenous Services, the Ontario Minister of Finance, the Ontario Minister of Municipal Affairs and Housing, the Ontario Minister of Northern Economic Development and Growth, and the Ontario Minister of Transportation for their consideration

**CARRIED** \_\_\_\_\_

**DEFEATED** \_\_\_\_\_

**DEFERRED**

\_\_\_\_\_  
**MAYOR'S SIGNATURE**

**Division Vote**

For Against

For Against

Councillor Aelick

\_\_\_\_ \_



**Ontario Clean Water Agency**  
**Agence Ontarienne Des Eaux**

Espanola Hub  
148 Fleming St, Suite 5  
Espanola, ON P5E 1R8

Tel: 705 869 5578  
Fax: 705-869-4374  
[www.ocwa.com](http://www.ocwa.com)

March 10, 2026

Dave Williamson  
The Corporation of the Town of Northeastern Manitoulin and the Islands  
14 Water Street East P.O. Box 608  
Little Current, Ontario  
P0P 1K0

**Re: Little Current Lagoon 2025 Annual Report**

Dear Mr. Williamson;

Attached is the 2025 annual report for the Little Current Lagoon. This report is completed based on the information we have in our records in accordance with current standards.

A copy of the report has been submitted to the Ministry of the Environment for their records.

If you have any questions or concerns, please contact me at 705 936 6713 or email at [espanolapct@ocwa.com](mailto:espanolapct@ocwa.com)

A handwritten signature in black ink, appearing to read 'K. Stringer'.

---

PCT – Natalie Wagar

General Manager – Keith Stringer

# *Little Current Lagoons*

*Annual Operating Report*

*ECA 4583-BLCKRQ*  
*Issued February 18, 2020*

*January 1, 2025 – December 31, 2025*

Prepared by the Ontario Clean Water Agency  
For The Corporation of the Town of Northeastern Manitoulin and the Islands



## SECTION 1: INTRODUCTION

The Ontario Clean Water Agency (OCWA) acts as the operating authority for the Little Current wastewater treatment. This document is prepared by OCWA to provide information on annual process performance.

- (a) A summary and interpretation of all Influent and a review of the historical trend of the sewage characteristics and flow rates;
- (b) A summary and interpretation of all Final Effluent monitoring data, including concentration, flow rates, loading and a comparison to the design objectives and compliance limits in this Approval, including an overview of the success and adequacy of the Works;
- (c) A summary of any deviation from the monitoring schedule and reasons for the current reporting year and a schedule for the next reporting year;
- (d) A summary of all operating issues encountered and corrective actions taken;
- (e) A summary of all normal and emergency repairs and maintenance activities carried out on any major structure, equipment, apparatus or mechanism forming part of the Works;
- (f) A summary of any effluent quality assurance or control measures undertaken;
- (g) A summary of the calibration and maintenance carried out on all Influent, and Imported Sewage monitoring equipment to ensure that the accuracy is within the tolerance of that equipment as required in this Approval or recommended by the manufacturer;
- (h) A summary of efforts made to achieve the design objectives in this Approval, including an assessment of the issues and recommendations for pro-active actions any are required under the following situations;
  - i. When any of the design objectives is not achieved more than 50% of the time in a year, or there is an increasing trend in deterioration of Final Effluent quality;
  - ii. When the Annual Average Daily Influent Flow reaches 80% of the Rated Capacity;
- (i) An estimate of the sludge volumes in the lagoon cells. Sludge volume is to be measured every five (5) years, but may be estimated in the interim years. A summary of disposal locations and volumes of sludge disposed of must also be provided if sludge was disposed of during the reporting period;
- (j) A summary of any complaints received and any steps taken to address the complaints; and
- (k) A summary of all Bypasses, Overflows, other situations outside Normal Operating Conditions and spills within the meaning of Part X of EPA and abnormal discharge events;
- (l) A summary of all Notice of Modifications to Sewage Works completed under Paragraph 1.d. of Condition 10, including a report on status of implementation of all modification;



- (m) A summary of efforts made to achieve conformations with Procedure F-5-1 including but not limited to projects undertaken and completed in the sanitary sewer system that result in overall Bypass/Overflow elimination including expenditures and proposed projects to eliminate Bypass/Overflows with estimated budget forecasting for the year following that for which the report is submitted; and Any changes or updates to the schedule for completion of construction and commissioning operation of major process (es) / equipment groups in the Proposed Works

## SECTION 2: Description of Facility

Capacity of Facility:	1,500 m <sup>3</sup> /d
Service Area:	Town of Little Current
Service Population:	
Effluent Receiver:	7 km municipal drain to Strawberry Channel of Lake Huron
Major Process:	Facultative Lagoons – 3 cells Aeration Lagoon – 1 cell
Facility Classification:	Wastewater Treatment Class 1
Collection Classification:	Collection Class 2

## SECTION 3: Executive Summary

Annual average concentrations and objectives were **exceeded** for total phosphorus (TP).

The total effluent discharge from the Sewage Treatment Plant for the year was 410,697.60 m<sup>3</sup>.

The total raw sewage flow into the lagoons for the year was calculated to be 411,301.30 m<sup>3</sup> including the hauled septage being deposited in the lagoons.

Daily average raw sewage flows were **not exceeded** during the 2025 reporting period.



## SECTION 4: Process Data

The facility operator collects grab samples of raw sewage and sends them to an accredited laboratory for analysis. Raw flows are calculated using flow meter values.

Raw (Influent) Sampling					
Parameter	Frequency	Method	Results		
			Min	Avg	Max
<b>BOD<sub>5</sub> (mg/L)</b>	Quarterly	Composite – External Analysis (Lab)	74	154	217
<b>TSS (mg/L)</b>	Quarterly	Composite – External Analysis (Lab)	98	164	221
<b>TP (mg/L)</b>	Quarterly	Composite – External Analysis (Lab)	1.88	2.76	4.22
<b>TKN (mg/L)</b>	Quarterly	Composite – External Analysis (Lab)	11.5	22.0	35.8
<b>Flow (m<sup>3</sup>/d)</b>	Daily	Flow meter	390	1,123	4,607

The facility operator collects effluent samples and sends them to an accredited laboratory for analysis. All samples are collected on a bi-weekly basis. Depending on the parameter samples are collected by a composite sampler or by taking a grab sample. Effluent flows are based on raw flow meter calculations.

Treated (Effluent) Sampling		
Parameter	Frequency	Method
<b>CBOD<sub>5</sub></b>	Bi-weekly	4hr Composite – External Analysis (Lab)
<b>TSS</b>	Bi-weekly	4hr Composite – External Analysis (Lab)
<b>TP</b>	Bi-weekly	4hr Composite – External Analysis (Lab)
<b>TAN</b>	Bi-weekly	4hr Composite – External Analysis (Lab)
<b>TKN</b>	Bi-weekly	4hr Composite – External Analysis (Lab)
<b>Nitrate</b>	Bi-weekly	4hr Composite – External Analysis (Lab)
<b>Nitrite</b>	Bi-weekly	4hr Composite – External Analysis (Lab)
<b><i>E. coli</i></b>	Bi-weekly	4hr Composite – External Analysis (Lab)
<b>Hydrogen Sulphide</b>	Bi-weekly	Grab – External Analysis (Lab)
<b>Temperature</b>	Bi-weekly	Grab/Probe/Analyzer – Internal Analysis
<b>pH</b>	Bi-weekly	Grab/Probe/Analyzer – Internal Analysis
<b>Flow</b>	Daily	Equal to Raw Flow Rate



Compliance limits are based on annual averages for effluent concentrations.

Treated (Effluent Discharge) Sampling					
Month	CBOD <sub>5</sub> (mg/L)	TSS (mg/L)	Total Phosphorus (mg/L)	pH	
	Average Eff	Average Eff	Average Eff	Min	Max
January	9.5	9.0	0.34	7.62	7.91
February	17.5	21.5	1.43	7.16	7.60
March	15.0	23.0	0.71	7.06	8.09
April	5.5	12.0	0.83	7.89	8.11
May	8.0	9.50	1.20	7.00	7.28
June	4.0	7.0	1.23	7.14	7.36
July	6.67	18.33	2.21	7.41	7.80
August	8.5	22.50	3.10	7.64	8.11
September	4.0	4.50	2.05	7.47	7.63
October	4.0	3.0	2.06	7.36	7.61
November	4.0	14.0	1.32	7.07	7.47
December	4.0	19.0	1.15	7.09	7.76
Min				7.00	
Average	7.21	14.42	<b>1.58</b>		
Max			<b>3.10</b>		8.11
ECA Limit	25.0	25.0	1.0	6.0	9.5
ECA Objective	20.0	20.0	0.75	6.5	8.5

Additional Effluent Monitoring Samples - Averages												
Parameter Averages	Jan	Feb	Mar	Apr	May	Jun	Jul	Aug	Sept	Oct	Nov	Dec
TAN (mg/L)	10.85	13.20	5.25	4.25	4.40	2.60	6.07	6.65	0.25	0.20	0.35	0.57
TKN (mg/L)	11.30	14.70	5.85	4.30	5.50	3.10	6.50	7.60	1.00	1.20	1.30	1.53
Nitrite (mg/L)	0.03	0.03	0.03	0.03	0.29	0.24	0.03	0.68	0.03	0.03	0.07	0.05
Nitrate (mg/L)	0.13	0.16	0.08	0.10	1.12	0.29	0.09	0.92	0.06	0.06	0.43	1.00
H <sub>2</sub> S (mg/L)	0.02	0.02	0.02	0.02	0.02	0.02	0.02	0.02	0.02	0.02	0.02	0.02
<i>E. Coli</i> (CFU/100ml)	850	87,211	11,351	9.17	3.46	3.61	9.93	4.12	10.0	269.4	1.00	1.26
Temp	10	5.95	4.7	10	13.5	18.2	21.7	20.75	18	18	10.7	7
Conductivity (uS/cm)	842	957	920	724	729	811	836	748	823	769	806	818

\* E.coli average is calculated as a geometric mean

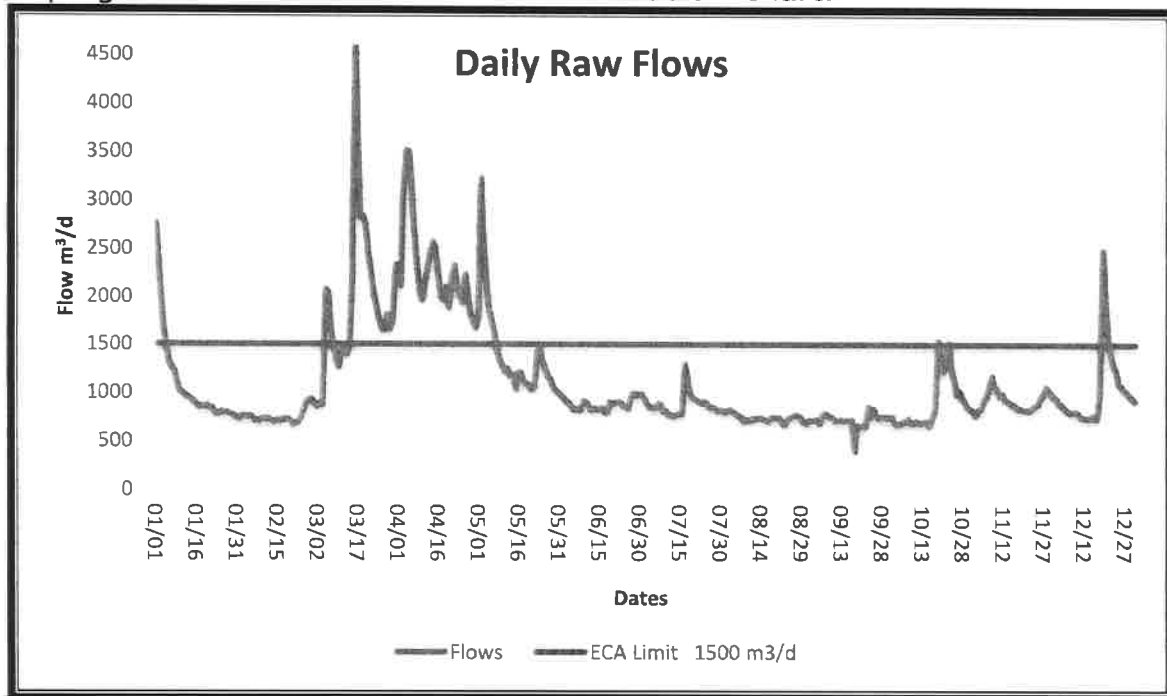
The raw and effluent parameters specified in the above table are analyzed by SGS Lakefield Research, an accredited laboratory located in Lakefield, Ontario.



Month	Flow Volumes				
	Total Volume Raw Flow (m <sup>3</sup> )	*Total Volume Septage (m <sup>3</sup> )	Avg Daily Flow Raw (m <sup>3</sup> /d)	Peak Daily Flow Raw (m <sup>3</sup> /d)	Effluent Volumes Treated (m <sup>3</sup> )
January	33,686.60	14.5	1,086.66	2,756.60	33,686.60
February	20,824.40	21.8	743.73	927.30	20,824.40
March	59,101.90	11.0	1,906.51	4,607.00	59,101.90
April	69,060.00	14.5	2,302.00	3,514.70	69,060.00
May	43,443.60	25.5	1,401.41	3,226.10	43,443.60
June	26,331.00	32.7	877.70	992.40	26,331.00
July	27,136.60	120.0	875.37	1,294.10	27,136.60
August	22,874.20	109.1	737.88	819.50	22,874.20
September	21,480.30	87.3	716.01	854.60	21,480.30
October	27,628.00	65.5	891.23	1,537.90	27,628.00
November	27,516.80	83.6	917.23	1,173.20	27,516.80
December	31,614.20	18.2	1,019.81	2,488.40	31,614.20
<b>Total</b>	<b>410,697.60</b>	<b>603.7</b>			<b>410,697.60</b>
<b>Average</b>			1,122.96		
<b>Maximum</b>				4,607	

\*Septage monthly volumes provide to OCWA by the Municipality. Septage was recorded from Wally's Septic Service in gallons and converted to m<sup>3</sup> by OCWA.

Septage volumes are not included in the below chart.





Year	Total Raw Sewage Flow m <sup>3</sup> /d	Avg Day Sewage Flow m <sup>3</sup> /d	Max Day Sewage Flow m <sup>3</sup> /d	Avg Day % of rated capacity 1,500 m <sup>3</sup> /d
2025	410,697.6	1,122.96	4,607.00	74.8%
2024	421,812.5	1,154.12	4,167.50	76.9%
2023	431,525.2	1,182.26	4,602.8	78.8 %
2022	371,387.2	1,014.51	4,973.1	67.6%
2021	449,414.7	1,231.27	3,585.3	82.0%

The annual average flows (1,122.96 m<sup>3</sup>/d) measured into the sewage lagoon did not exceed the specified rated capacity (1,500 m<sup>3</sup>/d) of the facility for the year; although, there were higher than normal flows occurring through many months of the year.

Peak flows were measured as high 4,607.0 m<sup>3</sup>/d, this was approximately 307% of the rated capacity.

Historically, the average sewage flows have exceeded the rated capacity. It has been identified through annual inspections of manholes that there is some infiltration occurring in the joints of the manholes when ground water levels rise.

There is a trigger to assess the capacity of the lagoons once the flows reach 80% capacity. Currently, the facility is at 74.8%.

The municipality continues to add new housing which is contributing to increased flows.

The total raw sewage flow into the lagoons for the year was calculated to be 411,301.3 m<sup>3</sup>.

The annual average for total phosphorus exceeded the limit and objective specified in the ECA.

The objective limits specified in the ECA were met more than 50% of the time during the 2025 operating year for CBOD, TSS and pH. Phosphorous was above the objectives more than 50 % of the time.

The operator did not observe a visible film, sheen, foam or discoloration on the receiving waters nor did he notice floating or settleable solids.

A total volume of 410,697.6 m<sup>3</sup> was discharged in 2025.

In an effort to meet the effluent objectives, the lagoon is treated with Aluminum Sulphate on a continuous basis.

Based on the above monitoring program and sampling records, the sewage works provided adequate treatment for the most part.



## SECTION 5: Facility Upsets & Non-Compliances

Phosphorous levels were above the prescribed limit on multiple occasions throughout the year and ended with an overall average above compliance limits.

Phosphorus levels began increasing in February and remained elevated throughout the year. Although incoming sludge was directed to Cell 1 and chemical dosages were adjusted to meet demand, operations were still unable to bring phosphorus concentrations below the required limit. In 2025, the treatment program switched from ferric sulphate to alum, which has shown some improvement in performance. In 2026, the municipality will conduct a full process review to address the ongoing elevated phosphorus levels.

Operations also noted that incoming sludge in the summer creates a spike in phosphorus.

Cell content sampling took place in August, September, October and November to find the source of the elevated phosphorous. Incoming sludge is being dumped into cell 1.

<b>Date of Sample</b>	<b>Sample Location</b>	<b>Total Phosphorous mg/L</b>
<b>August 26, 2025</b>	Cell 1 @ Halfway	2.89
	Cell 1 @ End of Cell	1.29
<b>August 27, 2025</b>	Cell 1 @ Halfway	2.03
	Cell 1 @ End of Cell	1.00
<b>September 11, 2025</b>	Cell 1 @ Halfway	1.45
	Cell 1 @ End of Cell	0.98
<b>September 22, 2025</b>	Cell 1 @ Halfway	2.89
	Cell 1 @ End of Cell	1.29
<b>October 6, 2025</b>	Cell 1 @ Halfway	4.91
	Cell 1 @ End of Cell	0.86
<b>November 17, 2025</b>	Cell 1 @ Halfway	0.58
	Cell 1 @ End of Cell	0.56

The raw sample scheduled for April 7 was not collected as planned due to a snowstorm and Purolator's inability to pick up the samples. As a result, the raw samples were collected on April 22, 2025.

Sampling was not conducted for raw on July 14, 2025. There were no logs or information explaining the missed sample.

The June 30 effluent sample was shifted to July 2 due to the Canada Day holiday and the unavailability of delivery services.



## SECTION 6: Maintenance

Plant maintenance is monitored using a Work Management System (WMS). Effluent monitoring equipment was calibrated as required in 2025. The flow meter was verified on June 20, 2025 and passed; the verification record is maintained electronically on the OCWA Hub server.

Maintenance and verification reports are attached as Appendix A.

## SECTION 7: Sludge

Sludge measuring was conducted in 2023 by Hydrasurvey. The next sludge measuring will be conducted in 2028. Estimated sludge levels are found below for 2025.

Cell #1 23,671 m<sup>3</sup>  
Cell #2 10,222 m<sup>3</sup>  
Cell #3 23,683 m<sup>3</sup>  
Cell #4 55 m<sup>3</sup>

## SECTION 8: Complaints

There were no complaints received in 2025.

## SECTION 9: Other

There was no work completed in the collection system in 2025.  
There was no work that required the use of an LOF.

There were three deviations from the sampling dates for 2025; this deviation is listed in **SECTION 5: Facility Upsets & Non-Compliances**.

A copy of the 2026 monitoring schedule is attached as Appendix B.

Septage was deposited at the lagoon by Wally's Septic. Volumes for each can be found in Appendix C.



# Appendix A

## Plant Maintenance

Workorder Summary Report

Report Start Date: Jan 1, 2025 12:00 AM  
 Report End Date: Dec 31, 2025 11:59 PM  
 Location: 5823\*  
 Work Order Type: All Workorder Type  
 Work Order Class:

WO #	Asset ID	Asset Description	Location Description	WorkOrder		PM Schedule		Workorder Details				WorkLog Detail	
				Type	Class	FEQ	Units	Work Order Description	Status	Schedule Start	Actual Start		Actual Finish
4300264	0000228125	PANEL ALARM/DIALER 1 WATER MAIN PS	5823, Little Current WWTL, Process, Process Control & Monitoring	PM	Inspection	1	MONTHS	Critical Alarm/Dialer Testing (1m) 5823	CLOSE	1/1/25 12:00 AM	1/27/25 02:55 PM	1/27/25 02:55 PM	Critical Alarm/Dialer Testing (1m) 5823 - Critical Alarm/Dialer Testing (1m) 5823. 5 Water st alarm tested and working well.
4301180			5823, Little Current WWTL	PM	HEALTH AND SAFETY	1	MONTHS	Health And Safety Inspection (1m) 5823	CLOSE	1/1/25 12:00 AM	1/22/25 02:42 PM	1/22/25 02:42 PM	Health And Safety Inspection (1m) 5823  Health And Safety Inspection (1m) 5823 No issues this month and shovel the door ways ongoing.
4301787			5823, Little Current WWTL	OPER	HEALTH AND SAFETY	1	YEARS	WHMIS/MSDS/NSF Review And Update (1y) 5823	CLOSE	1/1/25 12:00 AM	1/31/25 03:05 PM	1/31/25 03:05 PM	WHMIS/MSDS/NSF Review And Update (1y) 5823 - WHMIS/MSDS/NSF Review And Update (1y) 5823 all in good order.
4302504			5823, Little Current WWTL	PM	Inspection	1	MONTHS	TPM Inspection/Maintenance (1m) 5823	CLOSE	1/1/25 12:00 AM	1/31/25 03:01 PM	1/31/25 03:01 PM	TPM Inspection/Maintenance (1m) 5823  TPM Inspection/Maintenance (1m) 5823. Plants are working wrth some pumps acting up. pulling the issues and electrical for others. ok
4302551	0000228106	GENERATOR CAMPBELL PS DIESEL	5823, Little Current WWTL, Facility, Power Generation, Power Generators Permanent	PM	Refurbish/ Replace/Repair	1	MONTHS	Campbell PS Diesel Generator Inspection/Functional Test (1m/1y) 5823	CLOSE	1/1/25 12:00 AM	1/31/25 03:02 PM	1/31/25 03:02 PM	Campbell PS Diesel Generator Inspection/Functional Test (1m/1y) 5823 - Campbell PS Diesel Generator Inspection/Functional Test (1m/1y) 5823. Unit ran for 40 minutes and ok
4302593	0000228155	GENERATOR ROBINSON PS DIESEL	5823, Little Current WWTL, Facility, Power Generation, Power Generators Permanent	PM	Refurbish/ Replace/Repair	1	MONTHS	Robinson PS Diesel Generator Inspection/Functional Test (1m/1y) 5823	CLOSE	1/1/25 12:00 AM	1/31/25 03:03 PM	1/31/25 03:03 PM	Robinson PS Diesel Generator Inspection/Functional Test (1m/1y) 5823  Robinson PS Diesel Generator Inspection/Functional Test (1m/1y) 5823. Unit and fluids ok and operating as it should

Workorder Summary Report

Report Start Date: Jan 1, 2025 12:00 AM  
 Report End Date: Dec 31, 2025 11:59 PM  
 Location: 5823\*  
 Work Order Type: All Workorder Type  
 Work Order Class:

WO #	Asset ID	Asset Description	Location Description	WorkOrder		PM Schedule		Workorder Details					WorkLog Detail
				Type	Class	FREQ	Units	Work Order Description	Status	Schedule Start	Actual Start	Actual Finish	
4302649	0000228136	GENERATOR WATER ST PS DIESEL	5823, Little Current WWTL, Facility, Power Generation, Power Generators Permanent	PM	Refurbish/Replace/Repair	1	MONTHS	Water ST PS Diesel Generator Inspection/Functional Test (1m/1y) 5823	CLOSE	1/1/25 12:00 AM	1/27/25 03:00 PM	1/27/25 03:00 PM	Water ST PS Diesel Generator Inspection/Functional Test (1m/1y) 5823 - Water ST PS Diesel Generator Inspection/Functional Test (1m/1y) 5823 - Ran the unit several times and working swell.
4302780	0000228118	GENERATOR WATER MAIN PS DIESEL	5823, Little Current WWTL, Facility, Power Generation, Power Generators Permanent	PM	Refurbish/Replace/Repair	1	MONTHS	Water Main PS Diesel Generator Inspection/Functional Test (1m/1y) 5823	CLOSE	1/1/25 12:00 AM	1/22/25 02:40 PM	1/22/25 02:40 PM	Water Main PS Diesel Generator Inspection/Functional Test (1m/1y) 5823 - Water Main PS Diesel Generator Inspection/Functional Test (1m/1y) 5823 - Unit ran in test and worked as it should. All fluids are ok.
4335664			5823, Little Current WWTL, Process, Headworks, Lift Stations	CAP	Refurbish/Replace/Repair	0		5823 Little Current Main SPS, Pump Impellers (2)	COMP		3/6/25 10:47 AM	12/9/25 10:55 AM	5823 Little Current Main SPS, Pump Impellers (2) - Replacement impellers for the pumps at the main sewage pump station. When the pumps were rebuilt in the summer of 2024 we did not have new impellers to install. It was noted at the time that the impellers had noticeable wear. It is recommended that impellers be purchased to have on hand.
4336466			5823, Little Current WWTL	CAP	Refurbish/Replace/Repair	0		5823 5 water st check valve kits	CLOSE		7/23/25 02:39 PM	7/23/25 02:39 PM	5823 5 water st check valve kits - 5823 5 water st check valve kits
4338600	0000142594	HEATER ELECTRIC 1 ROBINSON PS	5823, Little Current WWTL, Facility, Heating Ventilation Air Conditioning, Heaters	CORR	Refurbish/Replace/Repair	0		5823 Little Current Robinson st heater replacement	CLOSE		5/2/25 01:54 PM	5/2/25 01:54 PM	electrical - heater has failed and needs replaced, ordered new one from Nedco electrical - replaced heater, work complete

Workorder Summary Report

Report Start Date: Jan 1, 2025 12:00 AM  
 Report End Date: Dec 31, 2025 11:59 PM  
 Location: 5823\*  
 Work Order Type: All Workorder Type  
 Work Order Class:

WO #	Asset ID	Asset Description	Location Description	WorkOrder		PM Schedule		Workorder Details				WorkLog Detail	
				Type	Class	FEQ	Units	Work Order Description	Status	Schedule Start	Actual Start		Actual Finish
4338601	0000142599	PUMP SUBMERSIBLE 1 45 WATER PS	5823, Little Current WWTL, Process	CORR	Refurbish/ Replace/Repair	0		5823 Little Current WWTP Main SLS Pump #1 inspection/repair	CLOSE		2/7/25 09:36 AM	2/7/25 09:36 AM	electrical - Pump #1 is tripping the breaker electrical tests suggest the motor is getting water inside. will check connections at the motor to decide if it should be sent out for repair. electrical - disconnected motor, tested motor, failed insulation test planned to replace motor. electrical - replaced motor/pump and wired in. attempted rotation test and noticed failure in contactor ordered replacement contactor from Dixon.
4339507	0000142599	PUMP SUBMERSIBLE 1 45 WATER PS	5823, Little Current WWTL, Process	CAP	Refurbish/ Replace/Repair	0		5823 Little Current Main SPS, Pump #1 Repair	CLOSE		4/8/25 11:53 AM	4/8/25 11:53 AM	5823 Little Current Main SPS, Pump #1 Repair - Pump #1 kept tripping the breaker on the control panel. It was suspected that there may be moisture in the pump motor. Pump has been pulled and replacement installed. Replacement pump is not running. Further diagnosis required. Motor to be sent to Industrial Motors in North Bay. Wadatek assisted with pump removal.
4353302	0000228125	PANEL ALARM/ DIALER 1 WATER MAIN PS	5823, Little Current WWTL, Process, Process Control & Monitoring	PM	Inspection	1	MONTHS	Critical Alarm/Dialer Testing (1m) 5823	CLOSE	2/1/25 12:00 AM	2/20/25 02:18 PM	2/20/25 02:18 PM	Critical Alarm/Dialer Testing (1m) 5823 - Critical Alarm/Dialer Testing (1m) 5823. Test alarms and dial pads at sites All working as they should 4 lift stations called through Telus security

Workorder Summary Report

Report Start Date: Jan 1, 2025 12:00 AM  
 Report End Date: Dec 31, 2025 11:59 PM  
 Location: 5823\*  
 Work Order Type: All Workorder Type  
 Work Order Class:

WO #	Asset ID	Asset Description	Location Description	WorkOrder		PM Schedule		Workorder Details					WorkLog Detail
				Type	Class	FEQ	Units	Work Order Description	Status	Schedule Start	Actual Start	Actual Finsh	
4353482			5823, Little Current WWTL	PM	HEALTH AND SAFETY	1	MONTHS	Health And Safety Inspection (1m) 5823	CLOSE	2/1/25 12:00 AM	2/5/25 01:31 PM	2/5/25 01:31 PM	Health And Safety Inspection (1m) 5823 - Health And Safety Inspection (1m) 5823. No issues this month. Shovel snow and sand as required.
4354961			5823, Little Current WWTL	PM	Inspection	1	MONTHS	TPM Inspection/Maintenance (1m) 5823	CLOSE	2/1/25 12:00 AM	2/20/25 02:21 PM	2/20/25 02:21 PM	TPM Inspection/Maintenance (1m) 5823 - TPM Inspection/Maintenance (1m) 5823. plants are in good order. Campbell st has 1 new pump , Water st has a new rebuild with a new starter,Robison st has a new rebuild and all pumps are working in all stations.
4354986	0000228106	GENERATOR CAMPBELL PS DIESEL	5823, Little Current WWTL, Facility, Power Generation, Power Generators Permanent	PM	Refurbish/ Replace/Repair	1	MONTHS	Campbell PS Diesel Generator Inspection/Functional Test (1m/1y) 5823	CLOSE	2/1/25 12:00 AM	2/20/25 02:23 PM	2/20/25 02:23 PM	Campbell PS Diesel Generator Inspection/Functional Test (1m/1y) 5823 - Campbell PS Diesel Generator Inspection/Functional Test (1m/1y) 5823 Unit is a bit tough to start though it went in test mode. Top up the anti freeze reservoir
4355016	0000228155	GENERATOR ROBINSON PS DIESEL	5823, Little Current WWTL, Facility, Power Generation, Power Generators Permanent	PM	Refurbish/ Replace/Repair	1	MONTHS	Robinson PS Diesel Generator Inspection/Functional Test (1m/1y) 5823	CLOSE	2/1/25 12:00 AM	2/20/25 02:24 PM	2/20/25 02:24 PM	Robinson PS Diesel Generator Inspection/Functional Test (1m/1y) 5823 - Robinson PS Diesel Generator Inspection/Functional Test (1m/1y) 5823 Run for 45 minutes and all ok and fluids ok
4355052	0000228136	GENERATOR WATER ST PS DIESEL	5823, Little Current WWTL, Facility, Power Generation, Power Generators Permanent	PM	Refurbish/ Replace/Repair	1	MONTHS	Water ST PS Diesel Generator Inspection/Functional Test (1m/1y) 5823	CLOSE	2/1/25 12:00 AM	2/7/25 09:48 AM	2/7/25 09:48 AM	Water ST PS Diesel Generator Inspection/Functional Test (1m/1y) 5823 - Water ST PS Diesel Generator Inspection/Functional Test (1m/1y) 5823 Run the unit for 40 minutes and all working as it should. Fluids ok

Workorder Summary Report

Report Start Date: Jan 1, 2025 12:00 AM  
 Report End Date: Dec 31, 2025 11:59 PM  
 Location: 5823\*  
 Work Order Type: All Workorder Type  
 Work Order Class:

WO #	Asset ID	Asset Description	Location Description	WorkOrder		PM Schedule		Work Order Description	Status	Workorder Details			WorkLog Detail
				Type	Class	FEQ	Units			Schedule Start	Actual Start	Actual Finish	
4355122	0000228118	GENERATOR WATER MAIN PS DIESEL	5823, Little Current WWTL, Facility, Power Generation, Power Generators Permanent	PM	Refurbish/ Replace/Repair	1	MONTHS	Water Main PS Diesel Generator Inspection/Functional Test (1m/1y) 5823	CLOSE	2/1/25 12:00 AM	2/7/25 09:50 AM	2/7/25 09:50 AM	Water Main PS Diesel Generator Inspection/Functional Test (1m/1y) 5823 - Water Main PS Diesel Generator Inspection/Functional Test (1m/1y) 5823 Run the unit for 45 minutes and all working well. Fluids ok and plant tidy.
4378195			5823, Little Current WWTL	CAP	Refurbish/ Replace/Repair	0		5823 Little Current Campbell St pump #2 dead short. remove9repair to Xylem and Wadetek	CLOSE		3/4/25 12:42 PM	3/4/25 12:42 PM	5823 1liyye Current Campbell St pump #2 dead short. remove9repair to Xylem and Wadetek - 5823 1liyye Current Campbell St pump #2 dead short. remove9repair to Xylem and Wadetek Feb 4-2025 Wadetek removed pump and will be shipped to Xylem via Manitoulin Transport on the Feb 5 for a repair.
4378889			5823, Little Current WWTL	CORR	Refurbish/ Replace/Repair	0		5823 Generator anit freeze coolant top up at Campbell st	CLOSE		2/7/25 09:32 AM	2/7/25 09:32 AM	5823 Generator anit freeze coolant top up at Campbell st. - 5823 Generator anit freeze coolant top up at Campbell st
4379933	0000142611	PUMP SUBMERSIBLF. 2 CAMPBELL PS	5823, Little Current WWTL, Process	CORR	Refurbish/ Replace/Repair	0		5823 Little Current Campbell Street SPS, Submersible Pump #2 Rebuild	CLOSE		4/8/25 11:54 AM	4/8/25 11:54 AM	5823 Little Current Campbell Street SPS, Submersible Pump #2 Rebuild -Water present in pump top, stator meggers to ground. Water present in stator inspection, glycol is empty. Impeller is wearing thin, insert ring is in ok condition, cheaper to replace both in the hard iron kit than it is to replace just the impeller. Plug-in seal broke apart when removing. Shaft is in good condition. Support bearing had to be drilled and tapped out of the stator housing as it came off the shaft.

Workorder Summary Report

Report Start Date: Jan 1, 2025 12:00 AM  
 Report End Date: Dec 31, 2025 11:59 PM  
 Location: 5823\*  
 Work Order Type: All Workorder Type  
 Work Order Class:

WO #	Asset ID	Asset Description	Location Description	WorkOrder		PM Schedule		Workorder Details					WorkLog Detail
				Type	Class	FEQ	Units	Work Order Description	Status	Schedule Start	Actual Start	Actual Finish	
4397716	0000228125	PANEL ALARM/ DIALER 1 WATER MAIN PS	5823, Little Current WWTL, Process, Process Control & Monitoring	PM	Inspection	1	MONTHS	Critical Alarm/Dialer Testing (1m) 5823	CLOSE	3/1/25 12:00 AM	3/4/25 12:44 PM	3/4/25 12:44 PM	Critical Alarm/Dialer Testing (1m) 5823 - Critical Alarm/Dialer Testing (1m) 5823. Testing and confirming stations alarms. All 4 stations are in good order.
4397884			5823, Little Current WWTL	PM	HEALTH AND SAFETY	1	MONTHS	Health And Safety Inspection (1m) 5823	CLOSE	3/1/25 12:00 AM	3/4/25 12:45 PM	3/4/25 12:45 PM	Health And Safety Inspection (1m) 5823 - Health And Safety Inspection (1m) 5823 Full inspection and no issues. All are addressed as they come up and all ok.
4398966			5823, Little Current WWTL	PM	Inspection	1	MONTHS	TPM Inspection/Maintenance (1m) 5823	CLOSE	3/1/25 12:00 AM	3/26/25 08:35 AM	3/26/25 08:35 AM	TPM Inspection/Maintenance (1m) 5823 - TPM Inspection/Maintenance (1m) 5823. Plants are in good order. Lagoons are filling up to a better level which i will control. All ok
4398991	0000228106	GENERATOR CAMPBELL PS DIESEL	5823, Little Current WWTL, Facility, Power Generation, Power Generators Permanent	PM	Refurbish/ Replace/Repair	1	MONTHS	Campbell PS Diesel Generator Inspection/Functional Test (1m/1y) 5823	CLOSE	3/1/25 12:00 AM	3/11/25 12:58 PM	3/11/25 12:58 PM	Campbell PS Diesel Generator Inspection/Functional Test (1m/1y) 5823 - Campbell PS Diesel Generator Inspection/Functional Test (1m/1y) 5823 Run the unit and running well/. All fluids are ok.
4399021	0000228155	GENERATOR ROBINSON PS DIESEL	5823, Little Current WWTL, Facility, Power Generation, Power Generators Permanent	PM	Refurbish/ Replace/Repair	1	MONTHS	Robinson PS Diesel Generator Inspection/Functional Test (1m/1y) 5823	CLOSE	3/1/25 12:00 AM	3/26/25 08:36 AM	3/26/25 08:36 AM	Robinson PS Diesel Generator Inspection/Functional Test (1m/1y) 5823 - Robinson PS Diesel Generator Inspection/Functional Test (1m/1y) 5823. Unit ran for 45 minutes and all ok with fluids ok also

Workorder Summary Report

Report Start Date: Jan 1, 2025 12:00 AM  
 Report End Date: Dec 31, 2025 11:59 PM  
 Location: 5823\*  
 Work Order Type: All Workorder Type  
 Work Order Class:

WO #	Asset ID	Asset Description	Location Description	WorkOrder		PM Schedule		Workorder Details					WorkLog Detail
				Type	Class	FEQ	Units	Work Order Description	Status	Schedule Start	Actual Start	Actual Finish	
4399057	0000228136	GENERATOR WATER ST PS DIESEL	5823, Little Current WWTL, Facility, Power Generation, Power Generators Permanent	PM	Refurbish/ Replace/Repair	1	MONTHS	Water ST PS Diesel Generator Inspection/Functional Test (1m/ly) 5823	CLOSE	3/1/25 12:00 AM	3/26/25 08:37 AM	3/26/25 08:37 AM	Water ST PS Diesel Generator Inspection/Functional Test (1m/ly) 5823 Water ST PS Diesel Generator Inspection/Functional Test (1m/ly) 5823. unit ran for 1 hour and all fluids ok and also under load. No issues
4399127	0000228118	GENERATOR WATER MAIN PS DIESEL	5823, Little Current WWTL, Facility, Power Generation, Power Generators Permanent	PM	Refurbish/ Replace/Repair	1	MONTHS	Water Main PS Diesel Generator Inspection/Functional Test (1m/ly) 5823	CLOSE	3/1/25 12:00 AM	3/4/25 12:48 PM	3/4/25 12:48 PM	Water Main PS Diesel Generator Inspection/Functional Test (1m/ly) 5823 Water Main PS Diesel Generator Inspection/Functional Test (1m/ly) 5823 Spider Bay and they station is in good order. all fluids and related items are ok.
4428807			5823, Little Current WWTL	CAP	Refurbish/ Replace/Repair	0		5823 LC laggon chemical dose issues	CLOSE		3/28/25 09:13 AM	3/28/25 09:13 AM	5823 LC laggon chemical dose issues - 5823 LC laggon chemical dose issues
4445954	0000228125	PANEL ALARM/DIALER 1 WATER MAIN PS	5823, Little Current WWTL, Process, Process Control & Monitoring	PM	Inspection	1	MONTHS	Critical Alarm/Dialer Testing (1m) 5823	CLOSE	4/1/25 12:00 AM	4/2/25 12:55 PM	4/2/25 12:55 PM	Critical Alarm/Dialer Testing (1m) 5823 Critical Alarm/Dialer Testing (1m) 5823 Cnfirm with teus and alrams working as they should.
4446348			5823, Little Current WWTL	PM	HEALTH AND SAFETY	1	MONTHS	Health And Safety Inspection (1m) 5823	CLOSE	4/1/25 12:00 AM	4/2/25 12:56 PM	4/2/25 12:56 PM	Health And Safety Inspection (1m) 5823 Health And Safety Inspection (1m) 5823

Workorder Summary Report

Report Start Date: Jan 1, 2025 12:00 AM  
 Report End Date: Dec 31, 2025 11:59 PM  
 Location: 5823\*  
 Work Order Type: All Workorder Type  
 Work Order Class:

WO #	Asset ID	Asset Description	Location Description	WorkOrder		PM Schedule		Workorder Details				WorkLog Detail	
				Type	Class	FEQ	Units	Work Order Description	Status	Schedule Start	Actual Start		Actual Finish
4447465			5823, Little Current WWTL	PM	Inspection	1	MONTHS	TPM Inspection/Maintenance (1m) 5823	CLOSE	4/1/25 12:00 AM	4/22/25 01:32 PM	4/22/25 01:32 PM	TPM Inspection/Maintenance (1m) 5823 - TPM Inspection/Maintenance (1m) 5823 Plants are in good order and all pumps are working and alarms work. Gensets tested and Campbell St will get the super vac cleaning after 1/2 load is off.
4447508	0000228106	GENERATOR CAMPBELL PS DIESEL	5823, Little Current WWTL, Facility, Power Generation, Power Generators Permanent	PM	Refurbish/ Replace/Repair	1	MONTHS	Campbell PS Diesel Generator Inspection/Functional Test (1m/1y) 5823	CLOSE	4/1/25 12:00 AM	4/16/25 11:05 AM	4/16/25 11:05 AM	Campbell PS Diesel Generator Inspection/Functional Test (1m/1y) 5823 - Campbell PS Diesel Generator Inspection/Functional Test (1m/1y) 5823. Run for 45 minutes and all working as it should. All fluids are ok.
4447550	0000228155	GENERATOR ROBINSON PS DIESEL	5823, Little Current WWTL, Facility, Power Generation, Power Generators Permanent	PM	Refurbish/ Replace/Repair	1	MONTHS	Robinson PS Diesel Generator Inspection/Functional Test (1m/1y) 5823	CLOSE	4/1/25 12:00 AM	4/8/25 11:55 AM	4/8/25 11:55 AM	Robinson PS Diesel Generator Inspection/Functional Test (1m/1y) 5823 - Robinson PS Diesel Generator Inspection/Functional Test (1m/1y) 5823 Unit ran for 30 minutes and all working as it should. Fluids ok
4447598	0000228136	GENERATOR WATER ST PS DIESEL	5823, Little Current WWTL, Facility, Power Generation, Power Generators Permanent	PM	Refurbish/ Replace/Repair	1	MONTHS	Water ST PS Diesel Generator Inspection/Functional Test (1m/1y) 5823	CLOSE	4/1/25 12:00 AM	4/8/25 11:59 AM	4/8/25 11:59 AM	Water ST PS Diesel Generator Inspection/Functional Test (1m/1y) 5823 - Water ST PS Diesel Generator Inspection/Functional Test (1m/1y) 5823 Unit ran and fluids tested. All ok

Workorder Summary Report

Report Start Date: Jan 1, 2025 12:00 AM  
 Report End Date: Dec 31, 2025 11:59 PM  
 Location: 5823\*  
 Work Order Type: All Workorder Type  
 Work Order Class:

WO #	Asset ID	Asset Description	Location Description	WorkOrder		PM Schedule		Workorder Details				WorkLog Detail	
				Type	Class	FEQ	Units	Work Order Description	Status	Schedule Start	Actual Start		Actual Finish
4447715	0000228118	GENERATOR WATER MAIN PS DIESEL	5823, Little Current WWTL, Facility, Power Generation, Power Generators Permanent	PM	Refurbish/ Replace/Repair	1	MONTHS	Water Main PS Diesel Generator Inspection/Functional Test (1m/1y) 5823	CLOSE	4/1/25 12:00 AM	4/8/25 11:58 AM	4/8/25 11:58 AM	Water Main PS Diesel Generator Inspection/Functional Test (1m/1y) 5823  Water Main PS Diesel Generator Inspection/Functional Test (1m/1y) 5823. Unit ran for 35 minutes and all ok.Fluids are ok and no issues.
4489065	0000154363	METER FLOW WATER MAIN PS	5823, Little Current WWTL, Process, Process Control & Monitoring	OPER	Calibration	1	YEARS	Meter Flow Little Current WWTL Calibration (1y) 5823 LC WW May 30	CLOSE	6/4/25 12:00 AM	6/20/25 01:25 PM	6/20/25 01:25 PM	verified flow
4506810	0000228125	PANEL ALARM/ DIALER 1 WATER MAIN PS	5823, Little Current WWTL, Process, Process Control & Monitoring	PM	Inspection	1	MONTHS	Critical Alarm/Dialer Testing (1m) 5823	CLOSE	5/1/25 12:00 AM	6/3/25 11:59 AM	6/3/25 11:59 AM	Critical Alarm/Dialer Testing (1m) 5823  Critical Alarm/Dialer Testing (1m) 5823 Test with telus alarms and all working as they should at all stations.
4507053			5823, Little Current WWTL	PM	HEALTH AND SAFETY	1	MONTHS	Health And Safety Inspection (1m) 5823	CLOSE	5/1/25 12:00 AM	5/14/25 12:57 PM	5/14/25 12:57 PM	Health And Safety Inspection (1m) 5823  Health And Safety Inspection (1m) 5823. No issues this month and adress as they come up.
4508191			5823, Little Current WWTL	PM	Inspection	1	MONTHS	TPM Inspection/Maintenance (1m) 5823	CLOSE	5/1/25 12:00 AM	6/3/25 12:01 PM	6/3/25 12:01 PM	TPM Inspection/Maintenance (1m) 5823  TPM Inspection/Maintenance (1m) 5823 Plants are all in good working order. Roof at Robinson St needs attention.

Workorder Summary Report

Report Start Date: Jan 1, 2025 12:00 AM  
 Report End Date: Dec 31, 2025 11:59 PM  
 Location: 5823\*  
 Work Order Type: All Workorder Type  
 Work Order Class:

WO #	Asset ID	Asset Description	Location Description	WorkOrder		PM Schedule		Workorder Details				WorkLog Detail	
				Type	Class	FEQ	Units	Work Order Description	Status	Schedule Start	Actual Start		Actual Finish
4508230	0000228106	GENERATOR CAMPBELL PS DIESEL	5823, Little Current WWTL, Facility, Power Generation, Power Generators Permanent	PM	Refurbish/ Replace/Repair	1	MONTHS	Campbell PS Diesel Generator Inspection/Functional Test (1m/1y) 5823	CLOSE	5/1/25 12:00 AM	5/21/25 12:03 PM	5/21/25 12:03 PM	Campbell PS Diesel Generator Inspection/Functional Test (1m/1y) 5823 - Campbell PS Diesel Generator Inspection/Functional Test (1m/1y) 5823 Full service and tests last week. All ok
4508281	0000228155	GENERATOR ROBINSON PS DIESEL	5823, Little Current WWTL, Facility, Power Generation, Power Generators Permanent	PM	Refurbish/ Replace/Repair	1	MONTHS	Robinson PS Diesel Generator Inspection/Functional Test (1m/1y) 5823	CLOSE	5/1/25 12:00 AM	5/21/25 12:04 PM	5/21/25 12:04 PM	Robinson PS Diesel Generator Inspection/Functional Test (1m/1y) 5823 - Robinson PS Diesel Generator Inspection/Functional Test (1m/1y) 5823 Full in service last week and all ok
4508331	0000228136	GENERATOR WATER ST PS DIESEL	5823, Little Current WWTL, Facility, Power Generation, Power Generators Permanent	PM	Refurbish/ Replace/Repair	1	MONTHS	Water ST PS Diesel Generator Inspection/Functional Test (1m/1y) 5823	CLOSE	5/1/25 12:00 AM	5/21/25 12:05 PM	5/21/25 12:05 PM	Water ST PS Diesel Generator Inspection/Functional Test (1m/1y) 5823 - Water ST PS Diesel Generator Inspection/Functional Test (1m/1y) 5823 +Full service last week and all ok
4508444	0000228118	GENERATOR WATER MAIN PS DIESEL	5823, Little Current WWTL, Facility, Power Generation, Power Generators Permanent	PM	Refurbish/ Replace/Repair	1	MONTHS	Water Main PS Diesel Generator Inspection/Functional Test (1m/1y) 5823	CLOSE	5/1/25 12:00 AM	5/21/25 12:07 PM	5/21/25 12:07 PM	Water Main PS Diesel Generator Inspection/Functional Test (1m/1y) 5823 - Water Main PS Diesel Generator Inspection/Functional Test (1m/1y) 5823 Full service last week and all ok
4540017			5823, Little Current WWTL	OPER	Inspection	1	YEARS	Grating Insp (1y) - 5823, Little Current WWTL	CLOSE	5/1/25 12:00 AM	5/14/25 12:56 PM	5/14/25 12:56 PM	Grating Insp (1y) - 5823, Little Current WWTL - Grating Insp (1y) - 5823, Little Current WWTL All in place and safe and secure

Workorder Summary Report

Report Start Date: Jan 1, 2025 12:00 AM  
 Report End Date: Dec 31, 2025 11:59 PM  
 Location: 5823\*  
 Work Order Type: All Workorder Type  
 Work Order Class:

WO #	Asset ID	Asset Description	Location Description	WorkOrder		PM Schedule		Workorder Details				WorkLog Detail	
				Type	Class	FEQ	Units	Work Order Description	Status	Schedule Start	Actual Start		Actual Finish
4555200			5823, Little Current WWTL	CAP	Refurbish/ Replace/Repair	0		5823 LC Robinson St pump pulled for PM rebuild/Town request. Jon to disconnect/Xylem to refurbish.	CLOSE		5/22/25 01:29 PM	5/22/25 01:29 PM	5823 LC Robinson St pump pulled for PM rebuild/Town request. Jon to disconnect/Xylem to refurbish. -- 5823 LC Robinson St pump pulled for PM rebuild/Town request. Jon to disconnect/Xylem to refurbish. Pulled May 22/25 and Jon wi;; disconnect Monday May 26. Then ship or drop at Xylem. electrical - disconnected pump
4556049			Little Current Wastewater Treatment Lagoon	CALL	Compliance	0		5823 - Little Current Lagoon - Spider Bay Lift Station Alarm	COMP		5/25/25 05:30 PM	5/25/25 09:30 PM	-- Received Telus alarm for spider bay marina, did not say what alarm was. Checked the lift station and no alarms present as per OIC. Level normal and both pumps running normally, as per OIC. After calling the number back I was told that number could not receive calls.
4556475			5823, Little Current WWTL	CAP	Refurbish/ Replace/Repair	0		5823 Little Current 84 Robinson St SPS pump rebuild #1 pump	COMP		10/28/25 12:42 PM	10/28/25 12:42 PM	84 Robinson St SPS pump rebuild #1 pump -- 84 Robinson St SPS pump rebuild #1 pump Ship to Xylem via Manitoulin May 30 2025 electrical -- asked to splice in new pump pump failed insualtion test, tested cable to building also and it failed. suggested to manager wiring from building to well be replaced and pump be sent back for inspection/ repair. electrical -electrical troubleshooting/repair of pump feed(s)

Workorder Summary Report

Report Start Date: Jan 1, 2025 12:00 AM  
 Report End Date: Dec 31, 2025 11:59 PM  
 Location: 5823\*  
 Work Order Type: All Workorder Type  
 Work Order Class:

WO #	Asset ID	Asset Description	Location Description	WorkOrder		PM Schedule		Workorder Details					WorkLog Detail
				Type	Class	FBQ	Units	Work Order Description	Status	Schedule Start	Actual Start	Actual Finish	
4573477	0000228125	PANEL ALARM/ DIALER 1 WATER MAIN PS	5823, Little Current WWTL, Process, Process Control & Monitoring	PM	Inspection	1	MONTHS	Critical Alarm/Dialer Testing (1m) 5823	CLOSE	6/1/25 12:00 AM	7/17/25 12:45 PM	7/17/25 12:45 PM	Critical Alarm/Dialer Testing (1m) 5823 - Critical Alarm/Dialer Testing (1m) 5823 Confirm all panels and cycle units. Working as they should.
4573733			5823, Little Current WWTL	PM	HEALTH AND SAFETY	1	MONTHS	Health And Safety Inspection (1m) 5823	CLOSE	6/1/25 12:00 AM	6/13/25 11:14 AM	6/13/25 11:14 AM	Health And Safety Inspection (1m) 5823 + Health And Safety Inspection (1m) 5823 Ongoing daily/weekly and monthly inspections and corrections as they come up. All ok.
4573893			5823, Little Current WWTL	PM	HEALTH AND SAFETY	1	YEARS	Fire Protection System Inspection (1y) 5823	CLOSE	6/1/25 12:00 AM	6/11/25 10:40 AM	6/11/25 10:40 AM	
4573927			5823, Little Current WWTL	OPER	Compliance	2	YEARS	Operations Manual Review And Update (2y) 5823	CLOSE	6/1/25 12:00 AM	7/29/25 11:40 AM	7/29/25 11:40 AM	Operations Manual Review And Update (2y) 5823 + Operations Manual Review And Update (2y) 5823 Just did DWQMS audits and all reviewed.
4574946			5823, Little Current WWTL	PM	Inspection	1	MONTHS	TPM Inspection/Maintenance (1m) 5823	CLOSE	6/1/25 12:00 AM	6/25/25 11:55 AM	6/25/25 11:55 AM	TPM Inspection/Maintenance (1m) 5823 - TPM Inspection/Maintenance (1m) 5823 All in good order Vac out the lagoon storage tank last night.
4574971	0000228106	GENERATOR CAMPBELL PS DIESEL	5823, Little Current WWTL, Facility, Power Generation, Power Generators Permanent	PM	Refurbish/ Replace/Repair	1	MONTHS	Campbell PS Diesel Generator Inspection/Functional Test (1m/1y) 5823	CLOSE	6/1/25 12:00 AM	6/25/25 11:57 AM	6/25/25 11:57 AM	Campbell PS Diesel Generator Inspection/Functional Test (1m/1y) 5823 + Campbell PS Diesel Generator Inspection/Functional Test (1m/1y) 5823 Both pumps ok and to be cleaned out in he next 2 weeks.

Workorder Summary Report

Report Start Date: Jan 1, 2025 12:00 AM  
 Report End Date: Dec 31, 2025 11:59 PM  
 Location: 5823\*  
 Work Order Type: All Workorder Type  
 Work Order Class:

WO #	Asset ID	Asset Description	Location Description	WorkOrder		PM Schedule		Workorder Details				WorkLog Detail	
				Type	Class	FEQ	Units	Work Order Description	Status	Schedule Start	Actual Start		Actual Finish
4574997	0000228155	GENERATOR ROBINSON PS DIESEL	5823, Little Current WWTL, Facility, Power Generation, Power Generators Permanent	PM	Refurbish/ Replace/Repair	1	MONTHS	Robinson PS Diesel Generator Inspection/Functional Test (1m/1y) 5823	CLOSE	6/1/25 12:00 AM	6/25/25 11:59 AM	6/25/25 11:59 AM	Robinson PS Diesel Generator Inspection/Functional Test (1m/1y) 5823 Robinson PS Diesel Generator Inspection/Functional Test (1m/1y) 5823 The #2 pump will be back in the next couple of weeks after the rebuild.
4575029	0000228136	GENERATOR WATER ST PS DIESEL	5823, Little Current WWTL, Facility, Power Generation, Power Generators Permanent	PM	Refurbish/ Replace/Repair	1	MONTHS	Water ST PS Diesel Generator Inspection/Functional Test (1m/1y) 5823	CLOSE	6/1/25 12:00 AM	6/25/25 12:01 PM	6/25/25 12:01 PM	Water ST PS Diesel Generator Inspection/Functional Test (1m/1y) 5823 Water ST PS Diesel Generator Inspection/Functional Test (1m/1y) 5823 Ran and fluids are ok all ok
4575095	0000228118	GENERATOR WATER MAIN PS DIESEL	5823, Little Current WWTL, Facility, Power Generation, Power Generators Permanent	PM	Refurbish/ Replace/Repair	1	MONTHS	Water Main PS Diesel Generator Inspection/Functional Test (1m/1y) 5823	CLOSE	6/1/25 12:00 AM	6/25/25 12:01 PM	6/25/25 12:01 PM	
4575107			5823, Little Current WWTL	PM	Refurbish/ Replace/Repair	1	YEARS	Tank Inspection (1y) 5823	CLOSE	6/1/25 12:00 AM	6/25/25 12:03 PM	6/25/25 12:03 PM	Tank Inspection (1y) 5823 Tank Inspection (1y) 5823 Tank was cleaned out by wallys last night All ok
4586470			5823, Little Current WWTL, Facility, Power Generation	PM	Inspection	1	YEARS	Battery Charger Route Inspection (1y) 5823	CLOSE	6/1/25 12:00 AM	6/3/25 12:03 PM	6/3/25 12:03 PM	Battery Charger Route Inspection (1y) 5823 Battery Charger Route Inspection (1y) 5823 All stations chargeerrs aree in good working order and no issues. Campbell St was upgraded a year ago.
4586473	0000228105	CHARGER 1 CAMPBELL PS GENSET	5823, Little Current WWTL, Facility, Power Generation	PM	Inspection	0		0000228105 CHARGER 1 CAMPBELL PS GENSET	CLOSE	6/1/25 12:00 AM	6/3/25 12:03 PM	6/3/25 12:03 PM	
4586476	0000228126	CHARGER 1 WATER MAIN PS GENSET	5823, Little Current WWTL, Facility, Power Generation	PM	Inspection	0		0000228126 CHARGER 1 WATER MAIN PS GENSET	CLOSE	6/1/25 12:00 AM	6/3/25 12:03 PM	6/3/25 12:03 PM	

Workorder Summary Report

Report Start Date: Jan 1, 2025 12:00 AM  
 Report End Date: Dec 31, 2025 11:59 PM  
 Location: 5823\*  
 Work Order Type: All Workorder Type  
 Work Order Class:

WO #	Asset ID	Asset Description	Location Description	WorkOrder		PM Schedule		Workorder Details					WorkLog Detail
				Type	Class	FEQ	Units	Work Order Description	Status	Schedule Start	Actual Start	Actual Finish	
4586479	0000142602	CHARGER 1 WATER PS GENSET	5823, Little Current WWTL, Facility, Power Generation	PM	Inspection	0		0000142602 CHARGER 1 WATER PS GENSET	CLOSE	6/1/25 12:00 AM	6/3/25 12:03 PM	6/3/25 12:03 PM	
4608864			5823, Little Current WWTL	PM	Inspection	1	YEARS	Facility Asset Review - 5823	CLOSE	6/25/25 12:00 AM	6/25/25 12:04 PM	6/25/25 12:04 PM	Facility Asset Review - 5823 Facility Asset Review - 5823 Assists are in place and tagged.
4653874			Little Current Wastewater Treatment Lagoon	CALL	Predictive Maintenance	0		5823 - Little Current Lagoon - Generator Start	CLOSE		6/26/25 11:30 PM	6/27/25 12:00 AM	-Started the lift station Generators.
4635322	0000228125	PANEL ALARM/DIALER 1 WATER MAIN PS	5823, Little Current WWTL, Process, Process Control & Monitoring	PM	Inspection	1	MONTHS	Critical Alarm/Dialer Testing (1m) 5823	CLOSE	7/2/25 12:00 AM	7/10/25 01:20 PM	7/10/25 01:20 PM	Critical Alarm/Dialer Testing (1m) 5823 Critical Alarm/Dialer Testing (1m) 5823 Confirm Telus alarm pads. Cucle and operate.
4635700			5823, Little Current WWTL	PM	HEALTH AND SAFETY	1	MONTHS	Health And Safety Inspection (1m) 5823	CLOSE	7/2/25 12:00 AM	7/10/25 01:21 PM	7/10/25 01:21 PM	Health And Safety Inspection (1m) 5823 Health And Safety Inspection (1m) 5823 No issues and addressed each time.
4636687			5823, Little Current WWTL	PM	Inspection	1	MONTHS	TPM Inspection/Maintenance (1m) 5823	CLOSE	7/2/25 12:00 AM	7/29/25 11:42 AM	7/29/25 11:42 AM	TPM Inspection/Maintenance (1m) 5823 TPM Inspection/Maintenance (1m) 5823 All stations are in good order. Robinson St pump is to be returned in 2 days.
4636730	0000228106	GENERATOR CAMPBELL PS DIESEL	5823, Little Current WWTL, Facility, Power Generation, Power Generators Permanent	PM	Refurbish/ Replace/Repair	1	MONTHS	Campbell PS Diesel Generator Inspection/Functional Test (1m/1y) 5823	CLOSE	7/2/25 12:00 AM	7/10/25 01:22 PM	7/10/25 01:22 PM	Campbell PS Diesel Generator Inspection/Functional Test (1m/1y) 5823 Campbell PS Diesel Generator Inspection/Functional Test (1m/1y) 5823 Unit ran 40 minutes and fluids are ok.

Workorder Summary Report

Report Start Date: Jan 1, 2025 12:00 AM  
 Report End Date: Dec 31, 2025 11:59 PM  
 Location: 5823\*  
 Work Order Type: All Workorder Type  
 Work Order Class:

WO #	Asset ID	Asset Description	Location Description	WorkOrder		PM Schedule		Workorder Details					
				Type	Class	FEQ	Units	Work Order Description	Status	Schedule Start	Actual Start	Actual Finsh	WorkLog Detail
4636772	0000228155	GENERATOR ROBINSON PS DIESEFL	5823, Little Current WWTL, Facility, Power Generation, Power Generators Permanent	PM	Refurbish/ Replace/Repair	1	MONTHS	Robinson PS Diesel Generator Inspection/Functional Test (1m/1y) 5823	CLOSE	7/2/25 12:00 AM	7/23/25 02:57 PM	7/23/25 02:57 PM	Robinson PS Diesel Generator Inspection/Functional Test (1m/1y) 5823 Robinson PS Diesel Generator Inspection/Functional Test (1m/1y) 5823 Unit ran for 40 minutes. All fluids are in good order and test ok.
4636820	0000228136	GENERATOR WATER ST PS DIESEL	5823, Little Current WWTL, Facility, Power Generation, Power Generators Permanent	PM	Refurbish/ Replace/Repair	1	MONTHS	Water ST PS Diesel Generator Inspection/Functional Test (1m/1y) 5823	CLOSE	7/2/25 12:00 AM	7/17/25 12:48 PM	7/17/25 12:48 PM	Water ST PS Diesel Generator Inspection/Functional Test (1m/1y) 5823 Water ST PS Diesel Generator Inspection/Functional Test (1m/1y) 5823 Run for 40 minutes and working as they should.
4636931	0000228118	GENERATOR WATER MAIN PS DIESEFL	5823, Little Current WWTL, Facility, Power Generation, Power Generators Permanent	PM	Refurbish/ Replace/Repair	1	MONTHS	Water Main PS Diesel Generator Inspection/Functional Test (1m/1y) 5823	CLOSE	7/2/25 12:00 AM	7/17/25 01:29 PM	7/17/25 01:29 PM	Water Main PS Diesel Generator Inspection/Functional Test (1m/1y) 5823 Water Main PS Diesel Generator Inspection/Functional Test (1m/1y) 5823 Ran for 40 mins and all fluids aere ok no issues wuth th transfer.
4643318			5823, Little Current WWTL	PM	Inspection	1	YEARS	P.S & Collection System Overflow Insp/Service (1y) 5823	COMP	7/2/25 12:00 AM	12/11/25 03:02 PM	12/11/25 03:02 PM	P.S & Collection System Overflow Insp/Service (1y) 5823 -Review of PS overflows at Main, Robinson, Campbell and Spider Bay completed. No issues to report
4679618	0000228125	PANEL ALARM/ DIALER 1 WATER MAIN PS	5823, Little Current WWTL, Process, Process Control & Monitoring	PM	Inspection	1	MONTHS	Critical Alarm/Dialer Testing (1m) 5823	CLOSE	8/1/25 12:00 AM	8/21/25 07:47 AM	8/21/25 07:47 AM	Critical Alarm/Dialer Testing (1m) 5823 Critical Alarm/Dialer Testing (1m) 5823 Yelus test and all stations receive the "ping" Bump a high level and ok

Workorder Summary Report

Report Start Date: Jan 1, 2025 12:00 AM  
 Report End Date: Dec 31, 2025 11:59 PM  
 Location: 5823\*  
 Work Order Type: All Workorder Type  
 Work Order Class:

WO #	Asset ID	Asset Description	Location Description	WorkOrder		PM Schedule		Workorder Details					WorkLog Detail
				Type	Class	FEQ	Units	Work Order Description	Status	Schedule Start	Actual Start	Actual Finish	
4679809			5823, Little Current WWTL	PM	HEALTH AND SAFETY	1	MONTHS	Health And Safety Inspection (1m) 5823	CLOSE	8/1/25 12:00 AM	8/11/25 12:58 PM	8/11/25 12:58 PM	Health And Safety Inspection (1m) 5823 - Health And Safety Inspection (1m) 5823 No issues this month
4680662			5823, Little Current WWTL	PM	Inspection	1	MONTHS	TPM Inspection/Maintenance (1m) 5823	CLOSE	8/1/25 12:00 AM	8/21/25 07:52 AM	8/21/25 07:52 AM	TPM Inspection/Maintenance (1m) 5823 - TPM Inspection/Maintenance (1m) 5823 Plants are in good order with a eye on a pump at Campbell st that required a reset this week and the roof at Robinson St need fixed due to there is a big piece of the tin that covers it missing which the wind has peeled away. Needs repairs. All ok
4680687	0000228106	GENERATOR CAMPBELL PS DIESEL	5823, Little Current WWTL, Facility, Power Generation, Power Generators Permanent	PM	Refurbish/ Replace/Repair	1	MONTHS	Campbell PS Diesel Generator Inspection/Functional Test (1m/1y) 5823	CLOSE	8/1/25 12:00 AM	8/18/25 01:50 PM	8/18/25 01:50 PM	Campbell PS Diesel Generator Inspection/Functional Test (1m/1y) 5823 - Campbell PS Diesel Generator Inspection/Functional Test (1m/1y) 5823 Run the unit for 45 minutes and all ok. Spare jugs of anti freeze on site. Clean and ok #2 pump had tripped once this month.
4680717	0000228155	GENERATOR ROBINSON PS DIESEL	5823, Little Current WWTL, Facility, Power Generation, Power Generators Permanent	PM	Refurbish/ Replace/Repair	1	MONTHS	Robinson PS Diesel Generator Inspection/Functional Test (1m/1y) 5823	CLOSE	8/1/25 12:00 AM	8/18/25 01:48 PM	8/18/25 01:48 PM	Robinson PS Diesel Generator Inspection/Functional Test (1m/1y) 5823 - Robinson PS Diesel Generator Inspection/Functional Test (1m/1y) 5823 Run the unit for 45 minutes. Fluids ok and spare anti freeze on site.

Workorder Summary Report

Report Start Date: Jan 1, 2025 12:00 AM  
 Report End Date: Dec 31, 2025 11:59 PM  
 Location: 5823\*  
 Work Order Type: All Workorder Type  
 Work Order Class:

WO #	Asset ID	Asset Description	Location Description	WorkOrder		PM Schedule		Workorder Details				WorkLog Detail	
				Type	Class	FEQ	Units	Work Order Description	Status	Schedule Start	Actual Start		Actual Finish
4680754	0000228136	GENERATOR WATER ST PS DIESEL	5823, Little Current WWTL, Facility, Power Generation, Power Generators Permanent	PM	Refurbish/ Replace/Repair	1	MONTHS	Water ST PS Diesel Generator Inspection/Functional Test (1m/1y) 5823	CLOSE	8/1/25 12:00 AM	8/11/25 12:59 PM	8/11/25 12:59 PM	Water ST PS Diesel Generator Inspection/Functional Test (1m/1y) 5823 - Water ST PS Diesel Generator Inspection/Functional Test (1m/1y) 5823 Run spider bay for 45 mins. All fluids are ok and no issues.
4680824	0000228118	GENERATOR WATER MAIN PS DIESEL	5823, Little Current WWTL, Facility, Power Generation, Power Generators Permanent	PM	Refurbish/ Replace/Repair	1	MONTHS	Water Main PS Diesel Generator Inspection/Functional Test (1m/1y) 5823	CLOSE	8/1/25 12:00 AM	8/21/25 07:49 AM	8/21/25 07:49 AM	Water Main PS Diesel Generator Inspection/Functional Test (1m/1y) 5823 - Water Main PS Diesel Generator Inspection/Functional Test (1m/1y) 5823 Last unit to test and a island wide power outage yesterday. Went down and all working as it should. Check levels after the power was restored and all ok
4728282	0000228125	PANEL ALARM/ DIALER 1 WATER MAIN PS	5823, Little Current WWTL, Process, Process Control & Monitoring	PM	Inspection	1	MONTHS	Critical Alarm/Dialer Testing (1m) 5823	CLOSE	9/1/25 12:00 AM	9/24/25 01:17 PM	9/24/25 01:17 PM	Critical Alarm/Dialer Testing (1m) 5823 - Critical Alarm/Dialer Testing (1m) 5823 Bump high levels and confirm all stations.
4728443			5823, Little Current WWTL	PM	HEALTH AND SAFETY	1	MONTHS	Health And Safety Inspection (1m) 5823	CLOSE	9/1/25 12:00 AM	9/24/25 01:18 PM	9/24/25 01:18 PM	Health And Safety Inspection (1m) 5823 - Health And Safety Inspection (1m) 5823 No issues and brought up each month

Workorder Summary Report

Report Start Date: Jan 1, 2025 12:00 AM  
 Report End Date: Dec 31, 2025 11:59 PM  
 Location: 5823\*  
 Work Order Type: All Workorder Type  
 Work Order Class:

WO #	Asset ID	Asset Description	Location Description	WorkOrder		PM Schedule		Workorder Details				WorkLog Detail	
				Type	Class	FREQ	Units	Work Order Description	Status	Schedule Start	Actual Start		Actual Finish
4729307			5823, Little Current WWTL	PM	Inspection	1	MONTHS	TPM Inspection/Maintenance (1m) 5823	CLOSE	9/1/25 12:00 AM	9/26/25 12:20 PM	9/26/25 12:20 PM	TPM Inspection/Maintenance (1m) 5823 - TPM Inspection/Maintenance (1m) 5823 plants are in good order. Robinson st pump is back again and will be installed again shortly after failing a electrical test Campbell will be cleaned out soon. Vac trucks have canceled 2 x's from 2 different company's saying their drivers keep not coming to work. Will stay on it.
4729332	0000228106	GENERATOR CAMPBELL PS DIESEL	5823, Little Current WWTL, Facility, Power Generation, Power Generators Permanent	PM	Refurbish/ Replace/Repair	1	MONTHS	Campbell PS Diesel Generator Inspection/Functional Test (1m/1y) 5823	CLOSE	9/1/25 12:00 AM	9/24/25 01:21 PM	9/24/25 01:21 PM	Campbell PS Diesel Generator Inspection/Functional Test (1m/1y) 5823 - Campbell PS Diesel Generator Inspection/Functional Test (1m/1y) 5823 Unit ran for 45 minutes and run as it should. Fluids ok and extra deionize water on order to keep on site for the battery.
4729362	0000228155	GENERATOR ROBINSON PS DIESEL	5823, Little Current WWTL, Facility, Power Generation, Power Generators Permanent	PM	Refurbish/ Replace/Repair	1	MONTHS	Robinson PS Diesel Generator Inspection/Functional Test (1m/1y) 5823	CLOSE	9/1/25 12:00 AM	9/15/25 12:27 PM	9/15/25 12:27 PM	Robinson PS Diesel Generator Inspection/Functional Test (1m/1y) 5823 - Robinson PS Diesel Generator Inspection/Functional Test (1m/1y) 5823 Unit ran and are ok and battery levels ok. Heater on internal and spare anti-freeze on site.

Workorder Summary Report

Report Start Date: Jan 1, 2025 12:00 AM  
 Report End Date: Dec 31, 2025 11:59 PM  
 Location: 5823\*  
 Work Order Type: All Workorder Type  
 Work Order Class:

WO #	Asset ID	Asset Description	Location Description	WorkOrder		PM Schedule		Workorder Details					WorkLog Detail
				Type	Class	FEQ	Units	Work Order Description	Status	Schedule Start	Actual Start	Actual Finish	
4729398	0000228136	GENERATOR WATER ST PS DIESEL	5823, Little Current WWTL, Facility, Power Generators Permanent	PM	Refurbish/ Replace/Repair	1	MONTHS	Water ST PS Diesel Generator Inspection/Functional Test (1m/1y) 5823	CLOSE	9/1/25 12:00 AM	9/15/25 12:30 PM	9/15/25 12:30 PM	Water ST PS Diesel Generator Inspection/Functional Test (1m/1y) 5823 - Water ST PS Diesel Generator Inspection/Functional Test (1m/1y) 5823 fluid levels and battery are ok. 40 minutes and all working as they should.
4729434			5823, Little Current WWTL	PM	Refurbish/ Replace/Repair	1	YEARS	Electric Heater Inspection (1y) 5823	CLOSE	9/1/25 12:00 AM	9/24/25 01:24 PM	9/24/25 01:24 PM	Electric Heater Inspection (1y) 5823 - Electric Heater Inspection (1y) 5823 Warm and blowing. All ok
4729473	0000228118	GENERATOR WATER MAIN PS DIESEL	5823, Little Current WWTL, Facility, Power Generators Permanent	PM	Refurbish/ Replace/Repair	1	MONTHS	Water Main PS Diesel Generator Inspection/Functional Test (1m/1y) 5823	CLOSE	9/1/25 12:00 AM	9/15/25 12:34 PM	9/15/25 12:34 PM	Water Main PS Diesel Generator Inspection/Functional Test (1m/1y) 5823 - Water Main PS Diesel Generator Inspection/Functional Test (1m/1y) 5823 Run for 45 minutes and all fluids and battery levels are antifreeze on site and working as it should.
4761000			5823, Little Current WWTL	CAP	Refurbish/ Replace/Repair	0		5823 Campbell St #2 pump tripped and requiring electrical inspection.	COMP		10/28/25 12:42 PM	10/28/25 12:42 PM	5823 Campbell St #2 pump tripped and requiring electrical inspection. - 5823 Campbell St #2 pump tripped and requiring electrical inspection. Jon to come look
4780592	0000228125	PANEL ALARM/ DIALER 1 WATER MAIN PS	5823, Little Current WWTL, Process, Process Control & Monitoring	PM	Inspection	1	MONTHS	Critical Alarm/Dialer Testing (1m) 5823	COMP	10/1/25 12:00 AM	10/28/25 12:36 PM	10/28/25 12:36 PM	Critical Alarm/Dialer Testing (1m) 5823 - Critical Alarm/Dialer Testing (1m) 5823 All stations ok though Robinson st has had some issues. TELUS security were to be on site Oct 28 but canceled that morning.

Workorder Summary Report

Report Start Date: Jan 1, 2025 12:00 AM  
 Report End Date: Dec 31, 2025 11:59 PM  
 Location: 5823\*  
 Work Order Type: All Workorder Type  
 Work Order Class:

				WorkOrder		PM Schedule		Workorder Details					
WO #	Asset ID	Asset Description	Location Description	Type	Class	FEQ	Units	Work Order Description	Status	Schedule Start	Actual Start	Actual Finish	WorkLog Detail
4780939			5823, Little Current WWTL	PM	HEALTH AND SAFETY	1	MONTHS	Health And Safety Inspection (1m) 5823	CLOSE	10/1/25 12:00 AM	10/7/25 11:26 AM	10/7/25 11:26 AM	Health And Safety Inspection (1m) 5823 - Health And Safety Inspection (1m) 5823No issues this month and addressed as they come up.
4782041			5823, Little Current WWTL	PM	Inspection	1	MONTHS	TPM Inspection/Maintenance (1m) 5823	COMP	10/1/25 12:00 AM	10/28/25 12:38 PM	10/28/25 12:38 PM	TPM Inspection/Maintenance (1m) 5823 - TPM Inspection/Maintenance (1m) 5823 All stations in working order. Campbell St has a pipe bypass and ocwa to address it shortly. Capital work will be required.
4782084	0000228106	GENERATOR CAMPBELL PS DIESEL	5823, Little Current WWTL, Facility, Power Generation, Power Generators Permanent	PM	Refurbish/ Replace/Repair	1	MONTHS	Campbell PS Diesel Generator Inspection/Functional Test (1m/1y) 5823	CLOSE	10/1/25 12:00 AM	10/7/25 11:14 AM	10/7/25 11:14 AM	Campbell PS Diesel Generator Inspection/Functional Test (1m/1y) 5823 - Campbell PS Diesel Generator Inspection/Functional Test (1m/1y) 5823 Run for a 45 mins and all ok.All fluids are ok and no issues.
4782126	0000228155	GENERATOR ROBINSON PS DIESEL	5823, Little Current WWTL, Facility, Power Generation, Power Generators Permanent	PM	Refurbish/ Replace/Repair	1	MONTHS	Robinson PS Diesel Generator Inspection/Functional Test (1m/1y) 5823	COMP	10/1/25 12:00 AM	10/21/25 01:26 PM	10/21/25 01:26 PM	Robinson PS Diesel Generator Inspection/Functional Test (1m/1y) 5823 - Robinson PS Diesel Generator Inspection/Functional Test (1m/1y) 5823 Unit ran and fluids on site. New anti freeze and battery fluid on site.
4782174	0000228136	GENERATOR WATER ST PS DIESEL	5823, Little Current WWTL, Facility, Power Generation, Power Generators Permanent	PM	Refurbish/ Replace/Repair	1	MONTHS	Water ST PS Diesel Generator Inspection/Functional Test (1m/1y) 5823	COMP	10/1/25 12:00 AM	10/28/25 12:40 PM	10/28/25 12:40 PM	Water ST PS Diesel Generator Inspection/Functional Test (1m/1y) 5823 - Water ST PS Diesel Generator Inspection/Functional Test (1m/1y) 5823 Unit ran and all fluids ok. New battery was required this month with the service call.

Workorder Summary Report

Report Start Date: Jan 1, 2025 12:00 AM  
 Report End Date: Dec 31, 2025 11:59 PM  
 Location: 5823\*  
 Work Order Type: All Workorder Type  
 Work Order Class:

WO #	Asset ID	Asset Description	Location Description	WorkOrder		PM Schedule		Work Order Description	Status	Workorder Details			WorkLog Detail
				Type	Class	FEQ	Units			Schedule Start	Actual Start	Actual Finish	
4782285	0000228118	GENERATOR WATER MAIN PS DIESEL	5823, Little Current WWTL, Facility, Power Generation, Power Generators Permanent	PM	Refurbish/ Replace/Repair	1	MONTHS	Water Main PS Diesel Generator Inspection/Functional Test (1m/ly) 5823	CLOSE	10/1/25 12:00 AM	10/7/25 11:28 AM	10/7/25 11:28 AM	Water Main PS Diesel Generator Inspection/Functional Test (1m/ly) 5823  Water Main PS Diesel Generator Inspection/Functional Test (1m/ly) 5823 Run the unit for 45 minutes. All fluids ok and purchased some de-ionized h2o to top up the battery.
4816406			5823, Little Current WWTL	CAP	Refurbish/ Replace/Repair	0		5823 Re install Robinson St pump #2 for the 2nd time due to electrical failure	COMP		10/28/25 12:41 PM	10/28/25 12:41 PM	5823 Re install Robinson St pump #2 for the 2nd time due to electrical failure  5823 Re install Robinson St pump #2 for the 2nd time due to electrical failure Jon going to Rona Oct 10 to buy shackle / bolts S S
4819540			5823, Little Current WWTL	CAP	Refurbish/ Replace/Repair	0		5823 Spider bay will not run and electrical issues requiring Vals	COMP		11/10/25 01:14 PM	11/10/25 01:14 PM	5823 Spider bay will not run and electrical issues requiring Vals  5823 Spider bay will not run and electrical issues requiring Vals Val on site and replaced a fuse and a new battery and test oct 24
4819542			5823, Little Current WWTL	CAP	Refurbish/ Replace/Repair	0		5823 Robinson st failed after 7.5 hours of operation during Oct 27 hydro one power outage	COMP		11/10/25 01:14 PM	11/10/25 01:14 PM	5823 Robinson st failed after 7.5 hours of operation during Oct 27 hydro one power outage  5823 Robinson st failed after 7.5 hours of operation during Oct 27 hydro one power outage  Called Monday morning after i could not get it going .They are to be here the week of Oct 28-31. Vals

Workorder Summary Report

Report Start Date: Jan 1, 2025 12:00 AM  
 Report End Date: Dec 31, 2025 11:59 PM  
 Location: 5823\*  
 Work Order Type: All Workorder Type  
 Work Order Class:

WO #	Asset ID	Asset Description	Location Description	WorkOrder		PM Schedule		Workorder Details				WorkLog Detail	
				Type	Class	FBQ	Units	Work Order Description	Status	Schedule Start	Actual Start		Actual Finish
4834032	0000228125	PANEL ALARM/DIALER 1 WATER MAIN PS	5823, Little Current WWTL, Process, Process Control & Monitoring	PM	Inspection	1	MONTHS	Critical Alarm/Dialer Testing (1m) 5823	COMP	11/1/25 12:00 AM	11/10/25 12:47 PM	11/10/25 12:47 PM	Critical Alarm/Dialer Testing (1m) 5823 - Critical Alarm/Dialer Testing (1m) 5823 Telus on site today and checking all alarm systems. There is a "3G" to a 5G" upgrade happening in the systems and needs to be completed to ensure all working as it should. Spider Bay station needs a complete change out and its in the works with Telus. A change in Campbell st was made on a component and all other 3 stions are ok.
4834231			5823, Little Current WWTL	PM	HEALTH AND SAFETY	1	MONTHS	Health And Safety Inspection (1m) 5823	COMP	11/1/25 12:00 AM	11/7/25 09:27 AM	11/7/25 09:27 AM	Health And Safety Inspection (1m) 5823 - Health And Safety Inspection (1m) 5823 Complete issues every day as they come up and no items this month. Snow shovel ready for next few months.
4835031			5823, Little Current WWTL	PM	Inspection	1	MONTHS	TPM Inspection/Maintenance (1m) 5823	COMP	11/1/25 12:00 AM	12/4/25 01:18 PM	12/4/25 01:18 PM	TPM Inspection/Maintenance (1m) 5823 - TPM Inspection/Maintenance (1m) 5823 Plant n good order and no issues. Aerator at the lagoons is on and cycle both. Clean out 3 of the 4 pump stations and all working as it should.
4835057	0000228106	GENERATOR CAMPBELL PS DIESEL	5823, Little Current WWTL, Facility, Power Generation, Power Generators Permanent	PM	Refurbish/ Replace/Repair	1	MONTHS	Campbell PS Diesel Generator Inspection/Functional Test (1m/1y) 5823	COMP	11/1/25 12:00 AM	11/10/25 12:50 PM	11/10/25 12:50 PM	Campbell PS Diesel Generator Inspection/Functional Test (1m/1y) 5823 - Campbell PS Diesel Generator Inspection/Functional Test (1m/1y) 5823 Unit ran for 1 hour and all fluids are ok. Spare fluids on site and internal heater is working as it should.

## Workorder Summary Report

Report Start Date: Jan 1, 2025 12:00 AM

Report End Date: Dec 31, 2025 11:59 PM

Location: 5823\*

Work Order Type: All Workorder Type

Work Order Class:

WO #	Asset ID	Asset Description	Location Description	WorkOrder		PM Schedule		Workorder Details				WorkLog Detail	
				Type	Class	FEQ	Units	Work Order Description	Status	Schedule Start	Actual Start		Actual Finsh
4835087	0000228155	GENERATOR ROBINSON PS DIESEL	5823, Little Current WWTL, Facility, Power Generation, Power Generators Permanent	PM	Refurbish/ Replace/Repair	1	MONTHS	Robinson PS Diesel Generator Inspection/Functional Test (1m/ly) 5823	COMP	11/1/25 12:00 AM	11/18/25 12:23 PM	11/18/25 12:23 PM	Robinson PS Diesel Generator Inspection/Functional Test (1m/ly) 5823 - Robinson PS Diesel Generator Inspection/Functional Test (1m/ly) 5823 Unit ran for 1 hour and all fluids are ok. Spare on site. Battery levels ok
4835123	0000228136	GENERATOR WATER ST PS DIESEL	5823, Little Current WWTL, Facility, Power Generation, Power Generators Permanent	PM	Refurbish/ Replace/Repair	1	MONTHS	Water ST PS Diesel Generator Inspection/Functional Test (1m/ly) 5823	COMP	11/1/25 12:00 AM	11/18/25 12:27 PM	11/18/25 12:27 PM	Water ST PS Diesel Generator Inspection/Functional Test (1m/ly) 5823 - Water ST PS Diesel Generator Inspection/Functional Test (1m/ly) 5823 Unit ran for 1 hour and all fluids are ok. Spare fluids on site and battery levels are ok. Pump cycled under load and no issues.
4835193	0000228118	GENERATOR WATER MAIN PS DIESEL	5823, Little Current WWTL, Facility, Power Generation, Power Generators Permanent	PM	Refurbish/ Replace/Repair	1	MONTHS	Water Main PS Diesel Generator Inspection/Functional Test (1m/ly) 5823	COMP	11/1/25 12:00 AM	11/13/25 11:27 AM	11/13/25 11:27 AM	
4861054			Little Current Wastewater Treatment Lagoon	OPER	Compliance	0		5823 - Little Current Lagoon - Campbell St High Level	COMP		11/2/25 04:00 PM	11/2/25 08:00 PM	- Called in for for a high level at the Campbell Street lift station. Arrived on site with pumps not running. Reset breaker on loft station and pumps started. Check manhole closest to the loft station that was also full! Called Wally's septic service to help pump station down. Pump station now empty and watching a cycle to see if pumps are working properly.

Workorder Summary Report

Report Start Date: Jan 1, 2025 12:00 AM  
 Report End Date: Dec 31, 2025 11:59 PM  
 Location: 5823\*  
 Work Order Type: All Workorder Type  
 Work Order Class:

WO #	Asset ID	Asset Description	Location Description	WorkOrder		PM Schedule		Workorder Details				WorkLog Detail	
				Type	Class	FEQ	Units	Work Order Description	Status	Schedule Start	Actual Start		Actual Finish
4860905			5823, Little Current WWTL	CAP	Refurbish/ Replace/Repair	0		5823 Campbell st back up required wally septic Sun no2-Nov 3 morning. 2x's	COMP		11/13/25 11:28 AM	11/13/25 11:28 AM	5823 Campbell st back up required wally septic Sun no2-Nov 3 morning. 2x's -5823 Campbell st back up required wally septic Sun no2-Nov 3 morning. 2x's
4861070			5823, Little Current WWTL	CAP	Refurbish/ Replace/Repair	0		5823 LC Campbell st #1 pump - wire caught in the pump	COMP		11/13/25 11:29 AM	11/13/25 11:29 AM	5823 LC Campbell st #1 pump - wire caught in the pump - 5823 LC Campbell st #1 pump - wire caught in the pump Vic driving it to xylem Nov 4-25 5823 LC Campbell st #1 pump - wire caught in the pump -Assisted in pulling pump for repair.
4861510			5823, Little Current WWTL	CAP	Refurbish/ Replace/Repair	0		5823 Spider Bay #1 pump rebuild at xylem.	COMP		11/18/25 12:20 PM	11/18/25 12:20 PM	5823 Spider Bay #1 pump rebuild at xylem. - 5823 Spider Bay #1 pump rebuild at xylem. Nortech did the disconnect Nov 6 Curtis Dixon vic dropped at Xylem nov 6.
4863470	0000142600	PUMP SUBMERSIBLE 2 45 WATER PS	5823, Little Current WWTL, Process	CAP	Refurbish/ Replace/Repair	0		5823 Little Current Lagoon, Spider Bay SPS Pump Repair	COMP		12/9/25 11:35 AM	12/9/25 11:35 AM	5823 Little Current Lagoon, Spider Bay SPS Pump Repair - One of the pumps at the Spider Bay SPS has failed and required repair. Cable is ok, stator meggers good. Stator inspection is dry, oil is clean. Impeller is chipped and worn, insert ring is worn down. Bearings feel good. Verifid stator and bearings by bumping the pump, both sound good

Workorder Summary Report

Report Start Date: Jan 1, 2025 12:00 AM  
 Report End Date: Dec 31, 2025 11:59 PM  
 Location: 5823\*  
 Work Order Type: All Workorder Type  
 Work Order Class:

WO #	Asset ID	Asset Description	Location Description	WorkOrder		PM Schedule		Workorder Details				WorkLog Detail	
				Type	Class	FEQ	Units	Work Order Description	Status	Schedule Start	Actual Start		Actual Finish
4864879			5823, Little Current WWTL	CALL	Refurbish/ Replace/Repair	0		5823 Little Current 5 water st generator / power outage	COMP		11/27/25 12:02 PM	11/28/25 12:30 AM	5823 Little Current 5 water st generator / power outage
4879737	0000228125	PANEL ALARM/ DIALER 1 WATER MAIN PS	5823, Little Current WWTL, Process, Process Control & Monitoring	PM	Inspection	1	MONTHS	Critical Alarm/Dialer Testing (1m) 5823	COMP	12/1/25 12:00 AM	12/4/25 01:21 PM	12/4/25 01:21 PM	5823 Little Current 5 water st generator / power outage On site at the time of the outage and WTP were all in hand and i was awaiting the sewitch over when the power dropped to the lift stations. It did not happen when the power was dumped and town assisted in getting a replacement battery. New one on order and keep the borrowed one in place till next week
4879889			5823, Little Current WWTL	PM	HEALTH AND SAFETY	1	MONTHS	Health And Safety Inspection (1m) 5823	COMP	12/1/25 12:00 AM	12/1/25 01:03 PM	12/1/25 01:03 PM	Critical Alarm/Dialer Testing (1m) 5823 Spider bay high level call out Dec 3 Cycled as it should and Telus security has a new 5G modem for the site.
4880715			5823, Little Current WWTL	PM	Inspection	1	MONTHS	TPM Inspection/Maintenance (1m) 5823	COMP	12/1/25 12:00 AM	12/9/25 11:55 AM	12/9/25 11:55 AM	Health And Safety Inspection (1m) 5823 No issues this onth and snow and sand at the door. TPM Inspection/Maintenance (1m) 5823 Plants in good order with some maintenance items being addressed. Campbell st the pipes are yo be repaired at the bottom of the well an Wally has steamed and cleaned out the chambers. at all but 5 water st. Spider bay has the new check valve and awaiting a pump rebuild.

Workorder Summary Report

Report Start Date: Jan 1, 2025 12:00 AM  
 Report End Date: Dec 31, 2025 11:59 PM  
 Location: 5823\*  
 Work Order Type: All Workorder Type  
 Work Order Class:

				WorkOrder		PM Schedule		Workorder Details					
WO #	Asset ID	Asset Description	Location Description	Type	Class	FEQ	Units	Work Order Description	Status	Schedule Start	Actual Start	Actual Finish	WorkLog Detail
4880740	0000228106	GENERATOR CAMPBELL PS DIESEL	5823, Little Current WWTL, Facility, Power Generation, Power Generators Permanent	PM	Refurbish/ Replace/Repair	1	MONTHS	Campbell PS Diesel Generator Inspection/Functional Test (1m/1y) 5823	COMP	12/1/25 12:00 AM	12/4/25 01:24 PM	12/4/25 01:24 PM	Campbell PS Diesel Generator Inspection/Functional Test (1m/1y) 5823 - Campbell PS Diesel Generator Inspection/Functional Test (1m/1y) 5823 Run the unit Dec 4 and all fluids are ok. Battery levels are ok and spare water, antifreeze on site.
4880773	0000228155	GENERATOR ROBINSON PS DIESEL	5823, Little Current WWTL, Facility, Power Generation, Power Generators Permanent	PM	Refurbish/ Replace/Repair	1	MONTHS	Robinson PS Diesel Generator Inspection/Functional Test (1m/1y) 5823	COMP	12/1/25 12:00 AM	12/8/25 02:51 PM	12/8/25 02:51 PM	Robinson PS Diesel Generator Inspection/Functional Test (1m/1y) 5823 - Robinson PS Diesel Generator Inspection/Functional Test (1m/1y) 5823 Run the unit for 1 hour and all fluids are ok and spare items on site. Battery levels are ok.
4880809	0000228136	GENERATOR WATER ST PS DIESEL	5823, Little Current WWTL, Facility, Power Generation, Power Generators Permanent	PM	Refurbish/ Replace/Repair	1	MONTHS	Water ST PS Diesel Generator Inspection/Functional Test (1m/1y) 5823	COMP	12/1/25 12:00 AM	12/1/25 01:09 PM	12/1/25 01:09 PM	Water ST PS Diesel Generator Inspection/Functional Test (1m/1y) 5823 - Water ST PS Diesel Generator Inspection/Functional Test (1m/1y) 5823 New battery required and town assisted in the battery. Auto parts North was bringing it in g
4880879	0000228118	GENERATOR WATER MAIN PS DIESEL	5823, Little Current WWTL, Facility, Power Generation, Power Generators Permanent	PM	Refurbish/ Replace/Repair	1	MONTHS	Water Main PS Diesel Generator Inspection/Functional Test (1m/1y) 5823	COMP	12/1/25 12:00 AM	12/8/25 02:53 PM	12/8/25 02:53 PM	

Workorder Summary Report

Report Start Date: Jan 1, 2025 12:00 AM  
 Report End Date: Dec 31, 2025 11:59 PM  
 Location: 5823\*  
 Work Order Type: All Workorder Type  
 Work Order Class:

WO #	Asset ID	Asset Description	Location Description	WorkOrder		PM Schedule		Workorder Details				WorkLog Detail	
				Type	Class	FEQ	Units	Work Order Description	Status	Schedule Start	Actual Start		Actual Finish
4906776			5823, Little Current WWTL	CAP	Refurbish/ Replace/Repair	0		5823 spider bay install of the check valve and clean and vac well.	COMP		12/8/25 02:48 PM	12/8/25 02:48 PM	5823 spider bay install of the check valve and clean and vac well. - 5823 spider bay install of the check valve and clean and vac well. 1 dec 3 had 2 vac trucks and a steamer to clean out and maintain empty while Wadetek had a crew installing a new check valve on the #1 side of the pipe work. Also sent the Wallys to Robinson st and Campbell St to clean during the day.
4906789			5823, Little Current WWTL	CAP	Refurbish/ Replace/Repair	0		5823 lc 5 water st new battery GENSET	COMP		12/4/25 02:10 PM	12/4/25 02:10 PM	5823 lc 5 water st new battery GENSET - 5823 lc 5 water st new battery GENSET purchased AT auto PARTS NORTH.



## Appendix B

# Monitoring Schedule

# Little Current WTP

LMR ORG# 6278  
DWS# 220002191

## Sampling Plan 2026

	Jan	Feb	Mar	Apr	May	Jun	Jul	Aug	Sep	Oct	Nov	Dec
Filter Efficiency (FE)- 1x/month												
Backwash TSS 1x/month (Annual average of 25mg/L)												

### Lead program

Distribution pH & Alkalinity

2 Locations

Next Due: January 1 to April 15, 2026  
Grab pH taken onsite and added to COC

Next Due: July 1 to October 15, 2026  
Grab pH taken onsite and added to COC

Distribution Lead, pH & Alkalinity

2 Locations

Next Due: 2027  
Grab pH taken onsite and added to COC

Next Due: 2027  
Grab pH taken onsite and added to COC

### Quarterly

THM (9131 HWY6, 9001 HWY6, 308 HWY540)

Distribution





HAA (9131 HWY6)

Distribution





Nitrate

Treated





Nitrite

Treated





### Other Sampling

DWQMS Assessment – 36 Months

Raw

Next Due: 2027

Schedule 23 – Annual

Treated

Schedule 24 –Annual

Treated

Sodium – 60 Months

Treated

Next Due: 2027

Fluoride – 60 Months

Treated

Next Due: 2027

### Regular Sampling Requirements

- Weekly - 1 Raw
- Weekly - 1 Treated
- Weekly - 3 Distribution

### Parameters

- E.coli & TC
- E.Coli & TC & HPC
- E.Coli & TC & (HPC on 1 sample)

### Time Between Samples

- 5-10 days
- 5-10 days
- 5-10 days

## Little Current Lagoons - Continuous Release

ORG#5823  
DWS#110000392

<u>Regular Sampling Requirements</u>	<u>Parameters</u>	<u>Location of Sample</u>	<u>Additional Information</u>
Quarterly – Raw Composite (4hr)	BOD, TSS, TP, TKN	Influent sampling point	January, April, July, October
Bi-weekly – Effluent Composite (4hr)	CBOD, TSS, TP, TAN, TKN, NO2, NO3, E.coli	Effluent sampling point	Once every 2 weeks
Bi-Weekly – Effluent Grab	H2S	Effluent sampling point	Once every 2 weeks
Bi-Weekly – Effluent Grab (onsite)	Temp, pH, Conductivity	Effluent sampling point	Once every 2 weeks
Bypasses	CBOD, TSS, TP	Effluent	Daily
Overflows @ lagoon (partially treated)	CBOD, TSS, TP, TAN, E.coli	@ overflow location	Take sample near beginning of event and every 8 hours for duration
Overflows @ lagoon – raw	BOD, TSS, TP, TKN	@ overflow location	Take sample near beginning of event and every 8 hours for duration
Overflows @ Lift Stations	BOD, TSS, TP, TKN, E.coli	@ overflow location	@ least 1 grab sample

# Little Current Lagoons - Continuous Release

ORG#5823  
DWS#110000392

## Sampling Plan 2026

Quarterly – Raw (Thursdays)	BOD, TSS, TP, TKN	January 8 April 1 July 9 October 8	
Bi-weekly – Effluent Composite (4hr) (Fridays)	CBOD, TSS, TP, TAN, TKN, NO2, NO3, E.coli	January 16 January 30	July 17 July 31
Bi-Weekly – Effluent Grab (Fridays)	H2S	February 13	August 14
Bi-Weekly – Effluent Grab (onsite) (Fridays)	Temp, pH, Conductivity	February 27 March 13 March 27 April 10 April 24 May 8 May 22 June 5 June 19 July 3	August 28 September 11 September 25 October 9 October 23 November 6 November 20 December 4 December 18 December 29

**Saturday Waybills are required for Friday samples**

# January 26

January 26							February 26						
Su	Mo	Tu	We	Th	Fr	Sa	Su	Mo	Tu	We	Th	Fr	Sa
				1	2	3	1	2	3	4	5	6	7
4	5	6	7	8	9	10	8	9	10	11	12	13	14
11	12	13	14	15	16	17	15	16	17	18	19	20	21
18	19	20	21	22	23	24	22	23	24	25	26	27	28
25	26	27	28	29	30	31							

SUNDAY	MONDAY	TUESDAY	WEDNESDAY	THURSDAY	FRIDAY	SATURDAY
Dec-28	29	30	31	Jan-1-26 New Year's Day (Canada) 2 Alkalinity & pH Begins (DW)	2	3 Filter Efficiency
4	5 1 RW (E.Coli, TC) 1 TW (E.coli, TC, HPC) 3 DW (E.coli, TC, (on 1)HPC) Nitrate/Nitrite (TW)	6	7	8 Raw - Comp (BOD, TSS, TP, TKN)	9	10
11	12 1 RW (E.Coli, TC) 1 TW (E.coli, TC, HPC) 3 DW (E.coli, TC, (on 1)HPC) Schedule 23/24 (TW)	13	14	15	16 EFF - Comp (TKN, NO2, NO3, E.coli) EFF - Comp (CBOD, TSS, TP, TAN)	17
18	19 1 RW (E.Coli, TC) 1 TW (E.coli, TC, HPC) 3 DW (E.coli, TC, (on 1)HPC)	20	21	22	23	24
25	26 1 RW (E.Coli, TC) 1 TW (E.coli, TC, HPC) 3 DW (E.coli, TC, (on 1)HPC)	27	28	29	30 EFF - Comp (TKN, NO2, NO3, E.coli) EFF - Comp (CBOD, TSS, TP, TAN)	31

# February 26

February 26						
Su	Mo	Tu	We	Th	Fr	Sa
1	2	3	4	5	6	7
8	9	10	11	12	13	14
15	16	17	18	19	20	21
22	23	24	25	26	27	28

March 26						
Su	Mo	Tu	We	Th	Fr	Sa
1	2	3	4	5	6	7
8	9	10	11	12	13	14
15	16	17	18	19	20	21
22	23	24	25	26	27	28
29	30	31				

SUNDAY	MONDAY	TUESDAY	WEDNESDAY	THURSDAY	FRIDAY	SATURDAY
Feb-1	2 1 RW (E.Coli, TC) 1 TW (E.coli, TC, HPC) 3 DW (E.coli, TC, (on 1)HPC) LC Airport (TW: TC/EC) TSS (BW)	3 Filter Efficiency	4	5	6	7
8	9 1 RW (E.Coli, TC) 1 TW (E.coli, TC, HPC) 3 DW (E.coli, TC, (on 1)HPC)	10	11	12	13 EFF - Comp (TKN, NO2, NO3, E.coli) EFF - Comp (CBOD, TSS, TP, TAN)	14
15	16 Family Day	17 1 RW (E.Coli, TC) 1 TW (E.coli, TC, HPC) 3 DW (E.coli, TC, (on 1)HPC)	18	19	20	21
22	23 1 RW (E.Coli, TC) 1 TW (E.coli, TC, HPC) 3 DW (E.coli, TC, (on 1)HPC)	24	25	26	27 EFF - Comp (TKN, NO2, NO3, E.coli) EFF - Comp (CBOD, TSS, TP, TAN)	28

# March 26

March 26							April 26						
Su	Mo	Tu	We	Th	Fr	Sa	Su	Mo	Tu	We	Th	Fr	Sa
1	2	3	4	5	6	7	5	6	7	8	9	10	11
8	9	10	11	12	13	14	12	13	14	15	16	17	18
15	16	17	18	19	20	21	19	20	21	22	23	24	25
22	23	24	25	26	27	28	26	27	28	29	30		
29	30	31											

SUNDAY	MONDAY	TUESDAY	WEDNESDAY	THURSDAY	FRIDAY	SATURDAY
Mar-1	2 1 RW (E.Coli, TC) 1 TW (E.coli, TC, HPC) 3 DW (E.coli, TC, (on 1)HPC) TSS (BW)	3 Filter Efficiency	4	5	6	7
8	9 1 RW (E.Coli, TC) 1 TW (E.coli, TC, HPC) 3 DW (E.coli, TC, (on 1)HPC)	10	11	12	13 EFF - Comp (TKN, NO2, NO3, E.coli) EFF - Comp (CBOD, TSS, TP, TAN)	14
15	16 1 RW (E.Coli, TC) 1 TW (E.coli, TC, HPC) 3 DW (E.coli, TC, (on 1)HPC)	17	18	19	20	21
22	23 1 RW (E.Coli, TC) 1 TW (E.coli, TC, HPC) 3 DW (E.coli, TC, (on 1)HPC)	24	25	26	27 EFF - Comp (TKN, NO2, NO3, E.coli) EFF - Comp (CBOD, TSS, TP, TAN)	28
29	30 1 RW (E.Coli, TC) 1 TW (E.coli, TC, HPC) 3 DW (E.coli, TC, (on 1)HPC)	31	Apr-1	2	3	4

# April 26

April 26							May 26						
Su	Mo	Tu	We	Th	Fr	Sa	Su	Mo	Tu	We	Th	Fr	Sa
			1	2	3	4						1	2
5	6	7	8	9	10	11	3	4	5	6	7	8	9
12	13	14	15	16	17	18	10	11	12	13	14	15	16
19	20	21	22	23	24	25	17	18	19	20	21	22	23
26	27	28	29	30			24	25	26	27	28	29	30
							31						

SUNDAY	MONDAY	TUESDAY	WEDNESDAY	THURSDAY	FRIDAY	SATURDAY
Mar-29	30	31	Apr-1 Raw - Comp (BOD, TSS, TP, TKN)	2	3 Filter Efficiency Good Friday	4
5	6 Easter Monday	7 1 RW (E.Coli, TC) 1 TW (E.coli, TC, HPC) 3 DW (E.coli, TC, (on 1)HPC)	8 LC Airport (TW: TC/EC) Nitrate/Nitrite (TW) THM/HAA (DW) TSS (BW)	9	10 EFF - Comp (TKN, NO2, NO3, E.coli) EFF - Comp (CBOD, TSS, TP, TAN)	11
12	13 1 RW (E.Coli, TC) 1 TW (E.coli, TC, HPC) 3 DW (E.coli, TC, (on 1)HPC)	14	15 2 Alkalinity & pH Ends (DW)	16	17	18
19	20 1 RW (E.Coli, TC) 1 TW (E.coli, TC, HPC) 3 DW (E.coli, TC, (on 1)HPC)	21	22	23	24 EFF - Comp (TKN, NO2, NO3, E.coli) EFF - Comp (CBOD, TSS, TP, TAN)	25
26	27 1 RW (E.Coli, TC) 1 TW (E.coli, TC, HPC) 3 DW (E.coli, TC, (on 1)HPC)	28	29	30	May-1	2

# May 26

May 26							June 26						
Su	Mo	Tu	We	Th	Fr	Sa	Su	Mo	Tu	We	Th	Fr	Sa
3	4	5	6	7	8	9	7	8	9	10	11	12	13
10	11	12	13	14	15	16	14	15	16	17	18	19	20
17	18	19	20	21	22	23	21	22	23	24	25	26	27
24	25	26	27	28	29	30	28	29	30				
31													

SUNDAY	MONDAY	TUESDAY	WEDNESDAY	THURSDAY	FRIDAY	SATURDAY
Apr-26	27	28	29	30	May-1 Filter Efficiency	2
3	4 1 RW (E.coli, TC) 1 TW (E.coli, TC, HPC) 3 DW (E.coli, TC, (on 1)HPC)	5	6	7	8 EFF - Comp (TKN, NO2, NO3, E.coli) EFF - Comp (CBOD, TSS, TP, TAN)	9
10	11 1 RW (E.coli, TC) 1 TW (E.coli, TC, HPC) 3 DW (E.coli, TC, (on 1)HPC)	12	13	14	15	16
17	18 Victoria Day	19 1 RW (E.coli, TC) 1 TW (E.coli, TC, HPC) 3 DW (E.coli, TC, (on 1)HPC)	20	21	22 EFF - Comp (TKN, NO2, NO3, E.coli) EFF - Comp (CBOD, TSS, TP, TAN)	23
24	25 1 RW (E.coli, TC) 1 TW (E.coli, TC, HPC) 3 DW (E.coli, TC, (on 1)HPC)	26	27	28	29	30
31	Jun-1	2	3	4	5	6

# June 26

June 26						
Su	Mo	Tu	We	Th	Fr	Sa
7	8	9	10	11	12	13
14	15	16	17	18	19	20
21	22	23	24	25	26	27
28	29	30				

July 26						
Su	Mo	Tu	We	Th	Fr	Sa
5	6	7	8	9	10	11
12	13	14	15	16	17	18
19	20	21	22	23	24	25
26	27	28	29	30	31	

SUNDAY	MONDAY	TUESDAY	WEDNESDAY	THURSDAY	FRIDAY	SATURDAY
May-31	Jun-1 1 RW (E.Coli, TC) 1 TW (E.coli, TC, HPC) 3 DW (E.coli, TC, (on LC Airport (TW: TC/EC) TSS (BW)	2	3 Filter Efficiency	4	5 EFF - Comp (TKN, NO2, NO3, E.coli) EFF - Comp (CBOD, TSS, TP, TAN)	6
7	8 1 RW (E.Coli, TC) 1 TW (E.coli, TC, HPC) 3 DW (E.coli, TC, (on 1)HPC)	9	10	11	12	13
14	15 1 RW (E.Coli, TC) 1 TW (E.coli, TC, HPC) 3 DW (E.coli, TC, (on 1)HPC)	16	17	18	19 EFF - Comp (TKN, NO2, NO3, E.coli) EFF - Comp (CBOD, TSS, TP, TAN)	20
21	22 1 RW (E.Coli, TC) 1 TW (E.coli, TC, HPC) 3 DW (E.coli, TC, (on 1)HPC)	23	24	25	26	27
28	29 1 RW (E.Coli, TC) 1 TW (E.coli, TC, HPC) 3 DW (E.coli, TC, (on 1)HPC)	30	Jul-1	2	3	4

# July 26

July 26							August 26						
Su	Mo	Tu	We	Th	Fr	Sa	Su	Mo	Tu	We	Th	Fr	Sa
			1	2	3	4							1
5	6	7	8	9	10	11	2	3	4	5	6	7	8
12	13	14	15	16	17	18	9	10	11	12	13	14	15
19	20	21	22	23	24	25	16	17	18	19	20	21	22
26	27	28	29	30	31		23	24	25	26	27	28	29
							30	31					

SUNDAY	MONDAY	TUESDAY	WEDNESDAY	THURSDAY	FRIDAY	SATURDAY
Jun-28	29	30	Jul-1 Canada Day - Dominion Day (Canada)	2	3 EFF - Comp (TKN, NO2, NO3, E.coli) EFF - Comp (CBOD, TSS, TP, TAN) Filter Efficiency	4
5	6 1 RW (E.Coli, TC) 1 TW (E.coli, TC, HPC) 3 DW (E.coli, TC, (on 1)HPC)	7 Nitrate/Nitrite (TW) THM/HAA (DW) TSS (BW)	8 LC Airport (TW, TC/EC)	9 Raw - Comp (BOD, TSS, TP, TKN)	10	11
12	13 1 RW (E.Coli, TC) 1 TW (E.coli, TC, HPC) 3 DW (E.coli, TC, (on 1)HPC)	14	15	16	17 EFF - Comp (TKN, NO2, NO3, E.coli) EFF - Comp (CBOD, TSS, TP, TAN)	18
19	20 1 RW (E.Coli, TC) 1 TW (E.coli, TC, HPC) 3 DW (E.coli, TC, (on 1)HPC)	21	22	23	24	25
26	27 1 RW (E.Coli, TC) 1 TW (E.coli, TC, HPC) 3 DW (E.coli, TC, (on 1)HPC)	28	29	30	31 EFF - Comp (TKN, NO2, NO3, E.coli) EFF - Comp (CBOD, TSS, TP, TAN)	Aug-1

# August 26

August 26							September 26						
Su	Mo	Tu	We	Th	Fr	Sa	Su	Mo	Tu	We	Th	Fr	Sa
						1			1	2	3	4	5
2	3	4	5	6	7	8	6	7	8	9	10	11	12
9	10	11	12	13	14	15	13	14	15	16	17	18	19
16	17	18	19	20	21	22	20	21	22	23	24	25	26
23	24	25	26	27	28	29	27	28	29	30			
30	31												

SUNDAY	MONDAY	TUESDAY	WEDNESDAY	THURSDAY	FRIDAY	SATURDAY
Jul-26	27	28	29	30	31	Aug-1
2 Filter Efficiency	3 Civic Holiday (Canada)	4 1 RW (E.Coli, TC) 1 TW (E.coli, TC, HPC) 3 DW (E.coli, TC, (on TSS (BW)	5 LC Airport (TW: TC/EC)	6	7	8
9	10 1 RW (E.Coli, TC) 1 TW (E.coli, TC, HPC) 3 DW (E.coli, TC, (on 1)HPC)	11	12	13	14 EFF - Comp (TKN, NO2, NO3, E.coli) EFF - Comp (CBOD, TSS, TP, TAN)	15
16	17 1 RW (E.Coli, TC) 1 TW (E.coli, TC, HPC) 3 DW (E.coli, TC, (on 1)HPC)	18	19	20	21	22
23	24 1 RW (E.Coli, TC) 1 TW (E.coli, TC, HPC) 3 DW (E.coli, TC, (on 1)HPC)	25	26	27	28 EFF - Comp (TKN, NO2, NO3, E.coli) EFF - Comp (CBOD, TSS, TP, TAN)	29
30	31 1 RW (E.Coli, TC) 1 TW (E.coli, TC, HPC) 3 DW (E.coli, TC, (on 1)HPC)	Sep-1	2	3	4	5

# September 26

September 26							October 26						
Su	Mo	Tu	We	Th	Fr	Sa	Su	Mo	Tu	We	Th	Fr	Sa
		1	2	3	4	5			1	2	3	4	5
6	7	8	9	10	11	12	4	5	6	7	8	9	10
13	14	15	16	17	18	19	11	12	13	14	15	16	17
20	21	22	23	24	25	26	18	19	20	21	22	23	24
27	28	29	30				25	26	27	28	29	30	31

SUNDAY	MONDAY	TUESDAY	WEDNESDAY	THURSDAY	FRIDAY	SATURDAY
Aug-30	31	Sep-1	2	3 Filter Efficiency	4	5
6	7 Labour Day (Canada)	8	9 1 RW (E.Coli, TC) 1 TW (E.coli, TC, HPC) 3 DW (E.coli, TC, (on 1)HPC) TSS (BW)	10 LC Airport (TW, TC/EC)	11 EFF - Comp (TKN, NO2, NO3, E.coli) EFF - Comp (CBOD, TSS, TP, TAN)	12
13	14 1 RW (E.Coli, TC) 1 TW (E.coli, TC, HPC) 3 DW (E.coli, TC, (on 1)HPC)	15	16	17	18	19
20	21 1 RW (E.Coli, TC) 1 TW (E.coli, TC, HPC) 3 DW (E.coli, TC, (on 1)HPC)	22	23	24	25 EFF - Comp (TKN, NO2, NO3, E.coli) EFF - Comp (CBOD, TSS, TP, TAN)	26
27	28 1 RW (E.Coli, TC) 1 TW (E.coli, TC, HPC) 3 DW (E.coli, TC, (on 1)HPC)	29	30 Purolator/OCWA Holiday (Reconciliation)	Oct-1	2	3

# October 26

October 26							November 26						
Su	Mo	Tu	We	Th	Fr	Sa	Su	Mo	Tu	We	Th	Fr	Sa
				1	2	3	1	2	3	4	5	6	7
4	5	6	7	8	9	10	8	9	10	11	12	13	14
11	12	13	14	15	16	17	15	16	17	18	19	20	21
18	19	20	21	22	23	24	22	23	24	25	26	27	28
25	26	27	28	29	30	31	29	30					

SUNDAY	MONDAY	TUESDAY	WEDNESDAY	THURSDAY	FRIDAY	SATURDAY
Sep-27	28	29	30	Oct-1	2 Filter Efficiency	3
4	5 1 RW (E.Coli, TC) 1 TW (E.coli, TC, HPC) 3 DW (E.coli, TC, (on 1)HPC)	6 Nitrate/Nitrite (TW) THM/HAA (DW) TSS (BW)	7 LC Airport (TW: TC/EC)	8 Raw - Comp (BOD, TSS, TP, TKN)	9 EFF - Comp (TKN, NO2, NO3, E.coli) EFF - Comp (CBOD, TSS, TP, TAN)	10
11	12 Thanksgiving	13 1 RW (E.Coli, TC) 1 TW (E.coli, TC, HPC) 3 DW (E.coli, TC, (on 1)HPC)	14	15	16	17
18	19 1 RW (E.Coli, TC) 1 TW (E.coli, TC, HPC) 3 DW (E.coli, TC, (on 1)HPC)	20	21	22	23 EFF - Comp (TKN, NO2, NO3, E.coli) EFF - Comp (CBOD, TSS, TP, TAN)	24
25	26 1 RW (E.Coli, TC) 1 TW (E.coli, TC, HPC) 3 DW (E.coli, TC, (on 1)HPC)	27	28	29	30	31

# November 26

November 26							December 26						
Su	Mo	Tu	We	Th	Fr	Sa	Su	Mo	Tu	We	Th	Fr	Sa
1	2	3	4	5	6	7	6	7	8	9	10	11	12
8	9	10	11	12	13	14	13	14	15	16	17	18	19
15	16	17	18	19	20	21	20	21	22	23	24	25	26
22	23	24	25	26	27	28	27	28	29	30	31		
29	30												

SUNDAY	MONDAY	TUESDAY	WEDNESDAY	THURSDAY	FRIDAY	SATURDAY
Nov-1	2 1 RW (E.Coli, TC) 1 TW (E.coli, TC, HPC) 3 DW (E.coli, TC, (on LC Airport (TW: TC/EC) TSS (BW)	3 Filter Efficiency	4	5	6 EFF - Comp (TKN, NO2, NO3, E.coli) EFF - Comp (CBOD, TSS, TP, TAN)	7
8	9 1 RW (E.Coli, TC) 1 TW (E.coli, TC, HPC) 3 DW (E.coli, TC, (on 1)HPC)	10	11 Remembrance Day	12	13	14
15	16 1 RW (E.Coli, TC) 1 TW (E.coli, TC, HPC) 3 DW (E.coli, TC, (on 1)HPC)	17	18	19	20 EFF - Comp (TKN, NO2, NO3, E.coli) EFF - Comp (CBOD, TSS, TP, TAN)	21
22	23 1 RW (E.Coli, TC) 1 TW (E.coli, TC, HPC) 3 DW (E.coli, TC, (on 1)HPC)	24	25	26	27	28
29	30 1 RW (E.Coli, TC) 1 TW (E.coli, TC, HPC) 3 DW (E.coli, TC, (on 1)HPC)	Dec-1	2	3	4	5

# December 26

December 26							January 27						
Su	Mo	Tu	We	Th	Fr	Sa	Su	Mo	Tu	We	Th	Fr	Sa
		1	2	3	4	5						1	2
6	7	8	9	10	11	12	3	4	5	6	7	8	9
13	14	15	16	17	18	19	10	11	12	13	14	15	16
20	21	22	23	24	25	26	17	18	19	20	21	22	23
27	28	29	30	31			24	25	26	27	28	29	30
							31						

SUNDAY	MONDAY	TUESDAY	WEDNESDAY	THURSDAY	FRIDAY	SATURDAY
Nov-29	30	Dec-1	2	3 Filter Efficiency	4 EFF - Comp (TKN, NO2, NO3, E.coli) EFF - Comp (CBOD, TSS, TP, TAN)	5
6	7 1 RW (E.Coli, TC) 1 TW (E.coli, TC, HPC) 3 DW (E.coli, TC, (on LC Airport (TW: TC/EC) TSS (BW)	8	9	10	11	12
13	14 1 RW (E.Coli, TC) 1 TW (E.coli, TC, HPC) 3 DW (E.coli, TC, (on 1)HPC)	15	16	17	18 EFF - Comp (TKN, NO2, NO3, E.coli) EFF - Comp (CBOD, TSS, TP, TAN)	19
20	21 1 RW (E.Coli, TC) 1 TW (E.coli, TC, HPC) 3 DW (E.coli, TC, (on 1)HPC)	22	23	24 LAB CLOSES AT NOON	25 Christmas Day (Canada)	26 Boxing Day (Canada)
27	28 STAT - For Boxing Day	29 1 RW (E.Coli, TC) 1 TW (E.coli, TC, HPC) 3 DW (E.coli, TC, (on EFF - Comp (TKN, NO2, EFF - Comp (CBOD, TSS,	30	31 LAB CLOSES AT NOON (Wastewater samples need planning)	Jan-1-27	2

# January 27

January 27							February 27						
Su	Mo	Tu	We	Th	Fr	Sa	Su	Mo	Tu	We	Th	Fr	Sa
					1	2		1	2	3	4	5	6
3	4	5	6	7	8	9	7	8	9	10	11	12	13
10	11	12	13	14	15	16	14	15	16	17	18	19	20
17	18	19	20	21	22	23	21	22	23	24	25	26	27
24	25	26	27	28	29	30	28						
31													

SUNDAY	MONDAY	TUESDAY	WEDNESDAY	THURSDAY	FRIDAY	SATURDAY
Dec-27	28	29	30	31	Jan-1-27 New Year's Day (Canada) 2 Lead, Alkalinity & pH Begins (DW)	2
3 Filter Efficiency	4 1 RW (E.Coli, TC) 1 TW (E.coli, TC, HPC) 3 DW (E.coli, TC, (on LC Airport (TW: TC/EC)	5	6	7 Raw - Comp (BOD, TSS, TP, TKN)	8	9
10	11 1 RW (E.Coli, TC) 1 TW (E.coli, TC, HPC) 3 DW (E.coli, TC, (on Schedule 23/24 (TW)	12	13	14	15 EFF - Comp (TKN, NO2, NO3, E.coli) EFF - Comp (CBOD, TSS, TP, TAN)	16
17	18 1 RW (E.Coli, TC) 1 TW (E.coli, TC, HPC) 3 DW (E.coli, TC, (on 1)HPC)	19	20	21	22	23
24	25 1 RW (E.Coli, TC) 1 TW (E.coli, TC, HPC) 3 DW (E.coli, TC, (on Fluoride (TW)	26	27	28	29 EFF - Comp (TKN, NO2, NO3, E.coli) EFF - Comp (CBOD, TSS, TP, TAN)	30
31	Feb-1	2	3	4	5	6



## Appendix C

### Septage Volumes

**Wally's Septic Services**  
**2025 Nemi**

January	3200
February	4800
March	2400
April	3200
May	5600
June	7200
July	26,400
August	24,000
September	19,200
October	14,400
November	18,400
December	4,000
TOTAL	132800